

Datasheet for ABIN629701

anti-NMDA Receptor Synaptonuclear Signaling and Neuronal Migration Factor (NSMF) (Middle Region) antibody[Go to Product page](#)**1** Image

Overview

Quantity:	100 µg
Target:	NMDA Receptor Synaptonuclear Signaling and Neuronal Migration Factor (NSMF)
Binding Specificity:	Middle Region
Reactivity:	Human, Mouse, Rat, Dog
Host:	Rabbit
Clonality:	Polyclonal
Conjugate:	Un-conjugated
Application:	Western Blotting (WB)

Product Details

Immunogen:	NELF antibody was raised using the middle region of NELF corresponding to a region with amino acids RERSFSRSWSDPTPMKADTSHDSRDSSDLQSSHCTLDEAFEDLDWDTEKG
Specificity:	NELF antibody was raised against the middle region of NELF
Purification:	Purified

Target Details

Target:	NMDA Receptor Synaptonuclear Signaling and Neuronal Migration Factor (NSMF)
Alternative Name:	NELF (NSMF Products)
Background:	NELF influences outgrowth of olfactory axons and migration of LHRH neurons.
Molecular Weight:	29 kDa (MW of target protein)

Target Details

Pathways: [Synaptic Membrane](#)

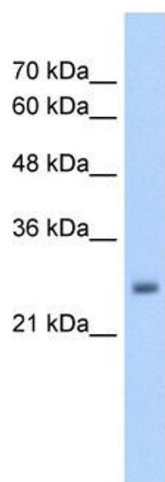
Application Details

Application Notes:	WB: 5 µg/mL Optimal conditions should be determined by the investigator.
Comment:	NELF Blocking Peptide, catalog no. 33R-7887, is also available for use as a blocking control in assays to test for specificity of this NELF antibody
Restrictions:	For Research Use only

Handling

Format:	Lyophilized
Reconstitution:	Lyophilized powder. Add distilled water for a 1 mg/mL concentration of NELF antibody in PBS
Concentration:	Lot specific
Buffer:	PBS
Handling Advice:	Avoid repeated freeze/thaw cycles. Dilute only prior to immediate use.
Storage:	4 °C/-20 °C
Storage Comment:	Store at 2-8 °C for short periods. For longer periods of storage, store at -20 °C.

Images



Western Blotting

Image 1. NELF antibody used at 5 ug/ml to detect target protein.