

Datasheet for ABIN629703 **anti-FECH antibody**



[Go to Product page](#)

1 Image

Overview

Quantity:	100 µg
Target:	FECH
Reactivity:	Human, Mouse, Rat, Dog
Host:	Rabbit
Clonality:	Polyclonal
Conjugate:	This FECH antibody is un-conjugated
Application:	Western Blotting (WB)

Product Details

Immunogen:	FECH antibody was raised using a synthetic peptide corresponding to a region with amino acids LDRDLMTLPIQNKLAPFIAKRRTPKIQEQYRRIGGGSPIKIWTQEGM
Purification:	Purified

Target Details

Target:	FECH
Alternative Name:	FECH (FECH Products)
Background:	Ferrochelatase is localized to the mitochondrion where it catalyzes the insertion of the ferrous form of iron into protoporphyrin IX in the heme synthesis pathway. Defects in ferrochelatase are associated with protoporphyria. Ferrochelatase is localized to the mitochondrion where it catalyzes the insertion of the ferrous form of iron into protoporphyrin IX in the heme synthesis pathway. Defects in ferrochelatase are associated with protoporphyria. Two transcript variants

Target Details

encoding different isoforms have been found for this gene.

Molecular Weight: 47 kDa (MW of target protein)

Pathways: [Transition Metal Ion Homeostasis](#)

Application Details

Application Notes: WB: 2.5 µg/mL

Optimal conditions should be determined by the investigator.

Comment: FECH Blocking Peptide, catalog no. 33R-4860, is also available for use as a blocking control in assays to test for specificity of this FECH antibody

Restrictions: For Research Use only

Handling

Format: Lyophilized

Reconstitution: Lyophilized powder. Add distilled water for a 1 mg/mL concentration of FECH antibody in PBS

Concentration: Lot specific

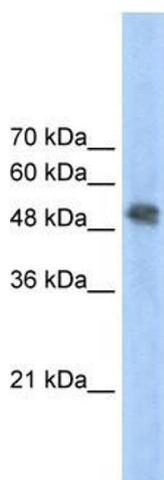
Buffer: PBS

Handling Advice: Avoid repeated freeze/thaw cycles.

Storage: 4 °C/-20 °C

Storage Comment: Store at 2-8 °C for short periods. For longer periods of storage, store at -20 °C.

Images



Western Blotting

Image 1. FECH antibody used at 2.5 µg/ml to detect target protein.