

Datasheet for ABIN629704 **anti-WDR13 antibody (N-Term)**



[Go to Product page](#)

1 Image

Overview

Quantity:	100 µg
Target:	WDR13
Binding Specificity:	N-Term
Reactivity:	Human, Mouse, Rat, Dog
Host:	Rabbit
Clonality:	Polyclonal
Conjugate:	This WDR13 antibody is un-conjugated
Application:	Western Blotting (WB)

Product Details

Immunogen:	WDR13 antibody was raised using the N terminal of WDR13 corresponding to a region with amino acids GQRYGPLSEPGSARAYSNSIVRSSRTTLDRMEDFEDDPRALGARGHRRSV
Specificity:	WDR13 antibody was raised against the N terminal of WDR13
Purification:	Purified

Target Details

Target:	WDR13
Alternative Name:	WDR13 (WDR13 Products)
Background:	WDR13 is a member of the WD repeat protein family. WD repeats are minimally conserved regions of approximately 40 amino acids typically bracketed by gly-his and trp-asp (GH-WD), which may facilitate formation of heterotrimeric or multiprotein complexes. Members of this

Target Details

family are involved in a variety of cellular processes, including cell cycle progression, signal transduction, apoptosis, and gene regulation. WDR13 gene is widely expressed in various tissues, and located in chromosome X. The function of this gene has not been determined.

Molecular Weight: 53 kDa (MW of target protein)

Application Details

Application Notes: WB: 1.25 µg/mL
Optimal conditions should be determined by the investigator.

Comment: WDR13 Blocking Peptide, catalog no. 33R-3511, is also available for use as a blocking control in assays to test for specificity of this WDR13 antibody

Restrictions: For Research Use only

Handling

Format: Lyophilized

Reconstitution: Lyophilized powder. Add distilled water for a 1 mg/mL concentration of WDR13 antibody in PBS

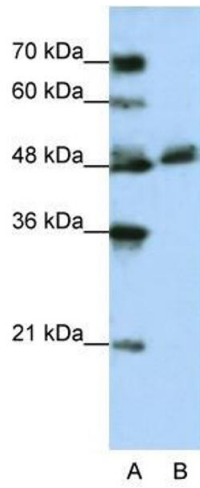
Concentration: Lot specific

Buffer: PBS

Handling Advice: Avoid repeated freeze/thaw cycles.
Dilute only prior to immediate use.

Storage: 4 °C/-20 °C

Storage Comment: Store at 2-8 °C for short periods. For longer periods of storage, store at -20 °C.



Western Blotting

Image 1. WDR13 antibody used at 1.25 ug/ml to detect target protein.