

## Datasheet for ABIN629713 **anti-FTCD antibody (N-Term)**

### 3 Images



[Go to Product page](#)

### Overview

Quantity:	100 µg
Target:	FTCD
Binding Specificity:	N-Term
Reactivity:	Human, Mouse, Rat, Dog
Host:	Rabbit
Clonality:	Polyclonal
Conjugate:	This FTCD antibody is un-conjugated
Application:	Western Blotting (WB), Immunohistochemistry (IHC)

### Product Details

Immunogen:	FTCD antibody was raised using the N terminal of FTCD corresponding to a region with amino acids FSEGKNQEVIDAISGAIQTGPGCVLLDVIDAGPSTNRTVYTFVGPPECVVE
Specificity:	FTCD antibody was raised against the N terminal of FTCD
Purification:	Purified

### Target Details

Target:	FTCD
Alternative Name:	FTCD ( <a href="#">FTCD Products</a> )
Background:	FTCD is a bifunctional enzyme that channels 1-carbon units from formiminoglutamate, a metabolite of the histidine degradation pathway, to the folate pool. FTCD is a bifunctional enzyme that channels 1-carbon units from formiminoglutamate, a metabolite of the histidine

## Target Details

degradation pathway, to the folate pool.

Molecular Weight: 60 kDa (MW of target protein)

## Application Details

Application Notes: WB: 1.25 µg/mL, IHC: 4-8 µg/mL  
Optimal conditions should be determined by the investigator.

Comment: FTCD Blocking Peptide, catalog no. 33R-3055, is also available for use as a blocking control in assays to test for specificity of this FTCD antibody

Restrictions: For Research Use only

## Handling

Format: Lyophilized

Reconstitution: Lyophilized powder. Add distilled water for a 1 mg/mL concentration of FTCD antibody in PBS

Concentration: Lot specific

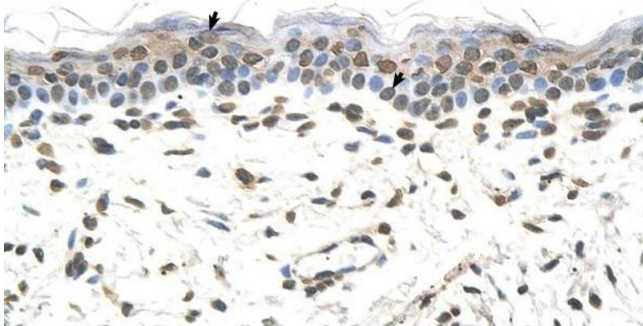
Buffer: PBS

Handling Advice: Avoid repeated freeze/thaw cycles.  
Dilute only prior to immediate use.

Storage: 4 °C/-20 °C

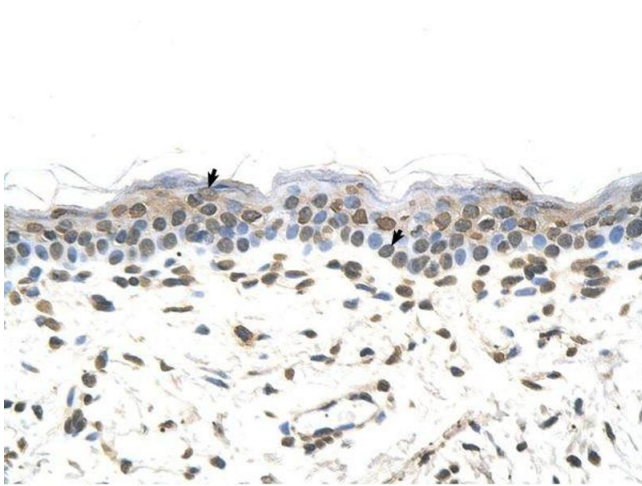
Storage Comment: Store at 2-8 °C for short periods. For longer periods of storage, store at -20 °C.

## Images



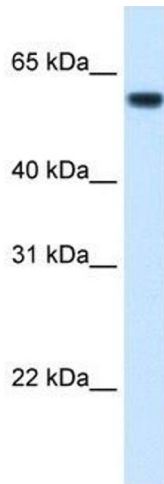
### Immunohistochemistry

**Image 1.** FTCD antibody was used for immunohistochemistry at a concentration of 4-8 µg/ml to stain Squamous epithelial cells (arrows) in Human Skin. Magnification is at 400X



### Immunohistochemistry

**Image 2.** FTCD antibody was used for immunohistochemistry at a concentration of 4-8 ug/ml. Magnification is at 400X



### Western Blotting

**Image 3.** FTCD antibody used at 1.25 ug/ml to detect target protein.