

## Datasheet for ABIN629715 **anti-RSU1 antibody (C-Term)**

### 3 Images



[Go to Product page](#)

### Overview

Quantity:	100 µg
Target:	RSU1
Binding Specificity:	C-Term
Reactivity:	Human, Mouse, Rat
Host:	Rabbit
Clonality:	Polyclonal
Conjugate:	This RSU1 antibody is un-conjugated
Application:	Western Blotting (WB), Immunohistochemistry (IHC)

### Product Details

Immunogen:	RSU1 antibody was raised using the C terminal of RSU1 corresponding to a region with amino acids PIADQFQLGVSHVFEYIRSETYKYLYGRHMQANPEPPKKNNDKSKKISRK
Specificity:	RSU1 antibody was raised against the C terminal of RSU1
Purification:	Purified

### Target Details

Target:	RSU1
Alternative Name:	RSU1 ( <a href="#">RSU1 Products</a> )
Background:	RSU1 is a protein that is involved in the Ras signal transduction pathway, growth inhibition, and nerve-growth factor induced differentiation processes, as determined in mouse and human cell line studies. In mouse, the protein was initially isolated based on its ability to inhibit v-Ras

## Target Details

transformation.

Molecular Weight: 31 kDa (MW of target protein)

## Application Details

Application Notes: WB: 1.25 µg/mL, IHC: 4-8 µg/mL  
Optimal conditions should be determined by the investigator.

Comment: RSU1 Blocking Peptide, catalog no. 33R-7149, is also available for use as a blocking control in assays to test for specificity of this RSU1 antibody

Restrictions: For Research Use only

## Handling

Format: Lyophilized

Reconstitution: Lyophilized powder. Add distilled water for a 1 mg/mL concentration of RSU1 antibody in PBS

Concentration: Lot specific

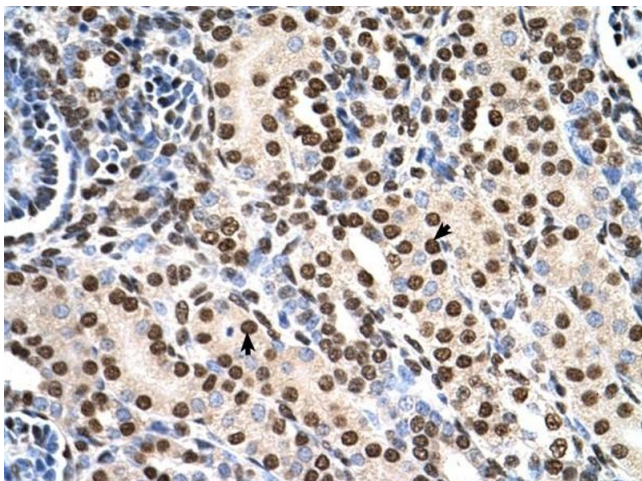
Buffer: PBS

Handling Advice: Avoid repeated freeze/thaw cycles.  
Dilute only prior to immediate use.

Storage: 4 °C/-20 °C

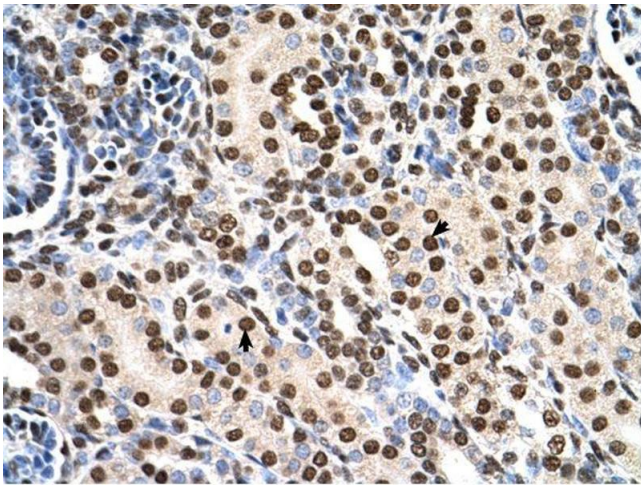
Storage Comment: Store at 2-8 °C for short periods. For longer periods of storage, store at -20 °C.

## Images



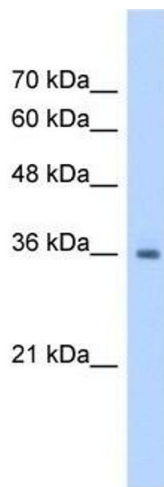
### Immunohistochemistry

**Image 1.** RSU1 antibody was used for immunohistochemistry at a concentration of 4-8 µg/ml to stain Epithelial cells of renal tubule (arrows) in Human Kidney. Magnification is at 400X



### Immunohistochemistry

**Image 2.** RSU1 antibody was used for immunohistochemistry at a concentration of 4-8 ug/ml. Magnification is at 400X



### Western Blotting

**Image 3.** RSU1 antibody used at 1.25 ug/ml to detect target protein.