

Datasheet for ABIN629717  
**anti-RGS13 antibody (Middle Region)**



[Go to Product page](#)

2 Images

## Overview

Quantity:	100 µg
Target:	RGS13
Binding Specificity:	Middle Region
Reactivity:	Human, Dog
Host:	Rabbit
Clonality:	Polyclonal
Conjugate:	This RGS13 antibody is un-conjugated
Application:	Western Blotting (WB), Immunohistochemistry (IHC)

## Product Details

Immunogen:	RGS13 antibody was raised using the middle region of RGS13 corresponding to a region with amino acids WSRISRAKKLYKIYIQPQSPREINIDSSTRETIIRNIQEPTETCFEEAQK
Specificity:	RGS13 antibody was raised against the middle region of RGS13
Purification:	Purified

## Target Details

Target:	RGS13
Alternative Name:	RGS13 ( <a href="#">RGS13 Products</a> )
Background:	RGS13 encodes a protein which is a member of the regulator of G protein signaling (RGS) family. RGS proteins accelerate GTPase activity of G protein alpha-subunits, thereby driving G protein into their inactive GDP-bound form, thus negatively regulating G protein signaling. RGS

## Target Details

---

proteins have been implicated in the fine tuning of a variety of cellular events in response to G protein-coupled receptor activation.

Molecular Weight: 19 kDa (MW of target protein)

Pathways: [Regulation of G-Protein Coupled Receptor Protein Signaling](#)

## Application Details

---

Application Notes: WB: 1.25 µg/mL, IHC: 4-8 µg/mL  
Optimal conditions should be determined by the investigator.

Comment: RGS13 Blocking Peptide, catalog no. 33R-10015, is also available for use as a blocking control in assays to test for specificity of this RGS13 antibody

Restrictions: For Research Use only

## Handling

---

Format: Lyophilized

Reconstitution: Lyophilized powder. Add distilled water for a 1 mg/mL concentration of RGS13 antibody in PBS

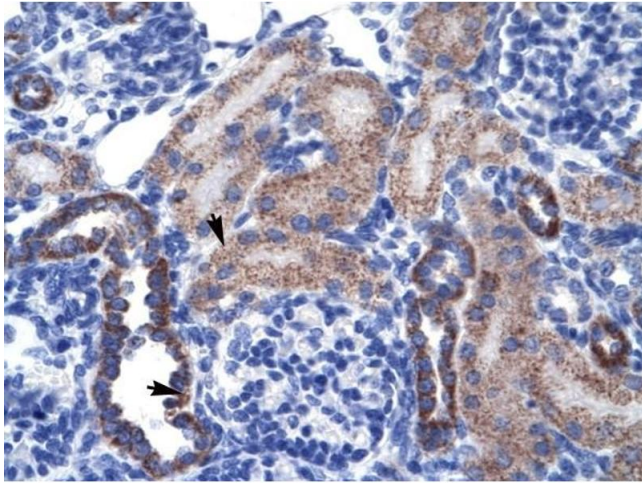
Concentration: Lot specific

Buffer: PBS

Handling Advice: Avoid repeated freeze/thaw cycles.  
Dilute only prior to immediate use.

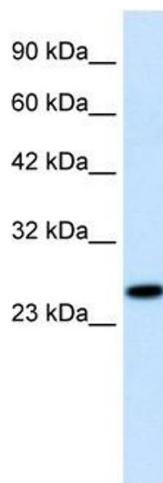
Storage: 4 °C/-20 °C

Storage Comment: Store at 2-8 °C for short periods. For longer periods of storage, store at -20 °C.



### Immunohistochemistry

**Image 1.** RGS13 antibody was used for immunohistochemistry at a concentration of 4-8 ug/ml to stain Epithelial cells of renal tubule (arrows) in Human Kidney. Magnification is at 400X



### Western Blotting

**Image 2.** RGS13 antibody used at 1.25 ug/ml to detect target protein.