

Datasheet for ABIN629718

**anti-Asialoglycoprotein Receptor 2 antibody (N-Term)**[Go to Product page](#)**2** Images

## Overview

Quantity:	100 µg
Target:	Asialoglycoprotein Receptor 2 (ASGR2)
Binding Specificity:	N-Term
Reactivity:	Human
Host:	Rabbit
Clonality:	Polyclonal
Conjugate:	This Asialoglycoprotein Receptor 2 antibody is un-conjugated
Application:	Western Blotting (WB), Immunohistochemistry (IHC)

## Product Details

Immunogen:	ASGR2 antibody was raised using the N terminal of ASGR2 corresponding to a region with amino acids STLTEVQAISTHGGSVGDKITSLGAKLEKQQDLKADHDALLFHLKHFPV
Specificity:	ASGR2 antibody was raised against the N terminal of ASGR2
Purification:	Purified

## Target Details

Target:	Asialoglycoprotein Receptor 2 (ASGR2)
Alternative Name:	ASGR2 ( <a href="#">ASGR2 Products</a> )
Background:	ASGR2 is a cell surface receptor that binds to galactose-terminated glycoproteins. It transports these glycoproteins via a series of membrane vesicles and tubules to an acidic-sorting organelle where the receptor and ligand dissociates. Then the receptor is recycled back to the

## Target Details

---

cell surface. There are four alternatively spliced transcript variants of this gene. This gene has multiple polyadenylation sites.

Molecular Weight: 34 kDa (MW of target protein)

Pathways: [Thyroid Hormone Synthesis](#)

## Application Details

---

Application Notes: WB: 4 µg/mL, IHC: 4-8 µg/mL  
Optimal conditions should be determined by the investigator.

Comment: ASGR2 Blocking Peptide, catalog no. 33R-8876, is also available for use as a blocking control in assays to test for specificity of this ASGR2 antibody

Restrictions: For Research Use only

## Handling

---

Format: Lyophilized

Reconstitution: Lyophilized powder. Add distilled water for a 1 mg/mL concentration of ASGR2 antibody in PBS

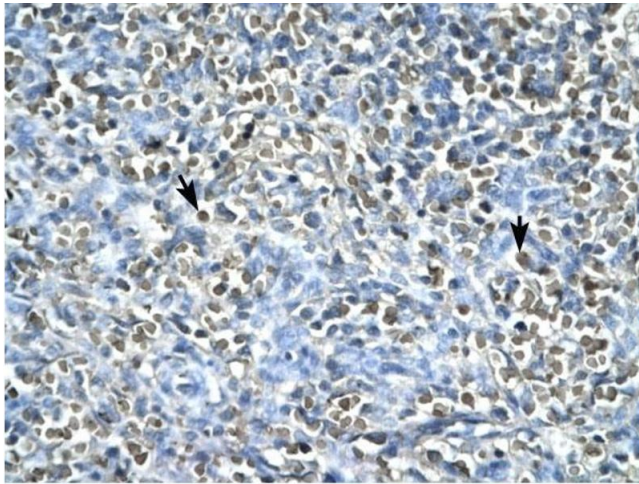
Concentration: Lot specific

Buffer: PBS

Handling Advice: Avoid repeated freeze/thaw cycles.  
Dilute only prior to immediate use.

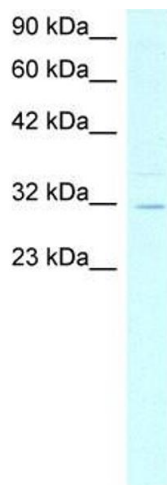
Storage: 4 °C/-20 °C

Storage Comment: Store at 2-8 °C for short periods. For longer periods of storage, store at -20 °C.



### Immunohistochemistry

**Image 1.** ASGR2 antibody was used for immunohistochemistry at a concentration of 4-8 ug/ml to stain Spleen cells (arrows) in Human Spleen. Magnification is at 400X



### Western Blotting

**Image 2.** ASGR2 antibody used at 4 ug/ml to detect target protein.