

## Datasheet for ABIN629719 **anti-MAT1A antibody (C-Term)**



[Go to Product page](#)

### 1 Image

#### Overview

Quantity:	100 µg
Target:	MAT1A
Binding Specificity:	C-Term
Reactivity:	Human, Dog
Host:	Rabbit
Clonality:	Polyclonal
Conjugate:	This MAT1A antibody is un-conjugated
Application:	Western Blotting (WB)

#### Product Details

Immunogen:	MAT1 A antibody was raised using the C terminal of MAT1 corresponding to a region with amino acids VAKSLVKAGLCRRVLVQVSYAIGVAEPLSISIFTYGTSSQKTERELLDVWH
Specificity:	MAT1 A antibody was raised against the C terminal of MAT1
Purification:	Purified

#### Target Details

Target:	MAT1A
Alternative Name:	MAT1A ( <a href="#">MAT1A Products</a> )
Background:	MAT1A catalyzes a two-step reaction that involves the transfer of the adenosyl moiety of ATP to methionine to form S-adenosylmethionine and triphosphate, which is subsequently cleaved to PPi and Pi. S-adenosylmethionine is the source of methyl groups for most biological

## Target Details

---

methylations. MAT1A is found as a homotetramer (MAT I) or a homodimer (MAT III) whereas a third form, MAT II (gamma), is encoded by the MAT2A gene. Mutations in its gene are associated with methionine adenosyltransferase deficiency.

Molecular Weight: 44 kDa (MW of target protein)

Pathways: [Mitotic G1-G1/S Phases](#), [M Phase](#), [Ribonucleoside Biosynthetic Process](#), [Methionine Biosynthetic Process](#)

## Application Details

---

Application Notes: WB: 2.5 µg/mL  
Optimal conditions should be determined by the investigator.

Comment: MAT1A Blocking Peptide, catalog no. 33R-9422, is also available for use as a blocking control in assays to test for specificity of this MAT1A antibody

Restrictions: For Research Use only

## Handling

---

Format: Lyophilized

Reconstitution: Lyophilized powder. Add distilled water for a 1 mg/mL concentration of MAT0 antibody in PBS

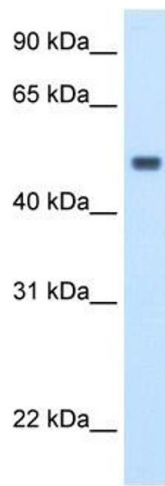
Concentration: Lot specific

Buffer: PBS

Handling Advice: Avoid repeated freeze/thaw cycles.  
Dilute only prior to immediate use.

Storage: 4 °C/-20 °C

Storage Comment: Store at 2-8 °C for short periods. For longer periods of storage, store at -20 °C.



### Western Blotting

**Image 1.** MAT1A antibody used at 2.5 ug/ml to detect target protein.