

Datasheet for ABIN629720 **anti-UBE2N antibody**



[Go to Product page](#)

1 Image

Overview

Quantity:	100 µg
Target:	UBE2N
Reactivity:	Human, Rat, Mouse, Zebrafish (Danio rerio), Dog, Drosophila melanogaster
Host:	Rabbit
Clonality:	Polyclonal
Conjugate:	This UBE2N antibody is un-conjugated
Application:	Western Blotting (WB)

Product Details

Immunogen:	UBE2 N antibody was raised using a synthetic peptide corresponding to a region with amino acids GRICLDILKDKWSPALQIRTVLLSIQALLSAPNPDDPLANDVAEQWKTNE
Purification:	Purified

Target Details

Target:	UBE2N
Alternative Name:	UBE2N (UBE2N Products)
Background:	UBE2N encodes a member of the E2 ubiquitin-conjugating enzyme family. The modification of proteins with ubiquitin is an important cellular mechanism for targeting abnormal or short-lived proteins for degradation. Ubiquitination involves at least three classes of enzymes: ubiquitin-activating enzymes, or E1s, ubiquitin-conjugating enzymes, or E2s, and ubiquitin-protein ligases, or E3s. Studies in mouse suggest that this protein plays a role in DNA postreplication repair.

Target Details

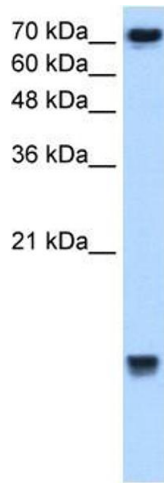
Molecular Weight:	17 kDa (MW of target protein)
Pathways:	TCR Signaling , Fc-epsilon Receptor Signaling Pathway , Activation of Innate immune Response , Toll-Like Receptors Cascades , Positive Regulation of Response to DNA Damage Stimulus , Ubiquitin Proteasome Pathway

Application Details

Application Notes:	WB: 2.5 µg/mL Optimal conditions should be determined by the investigator.
Comment:	UBE2N Blocking Peptide, catalog no. 33R-3532, is also available for use as a blocking control in assays to test for specificity of this UBE2N antibody
Restrictions:	For Research Use only

Handling

Format:	Lyophilized
Reconstitution:	Lyophilized powder. Add distilled water for a 1 mg/mL concentration of UBE0 antibody in PBS
Concentration:	Lot specific
Buffer:	PBS
Handling Advice:	Avoid repeated freeze/thaw cycles.
Storage:	4 °C/-20 °C
Storage Comment:	Store at 2-8 °C for short periods. For longer periods of storage, store at -20 °C.



Western Blotting

Image 1. UBE2N antibody used at 2.5 ug/ml to detect target protein.