

Datasheet for ABIN629727 **anti-UBR7 antibody (C-Term)**

2 Images



[Go to Product page](#)

Overview

Quantity:	100 µg
Target:	UBR7
Binding Specificity:	C-Term
Reactivity:	Human, Mouse, Rat, Dog
Host:	Rabbit
Clonality:	Polyclonal
Conjugate:	This UBR7 antibody is un-conjugated
Application:	Western Blotting (WB), Immunohistochemistry (IHC)

Product Details

Immunogen:	C14 ORF130 antibody was raised using the C terminal Of C14 rf130 corresponding to a region with amino acids DRSDPLMDTLSSMNRVQQVELICEYNDLKTDLKDYLRKFADEGTVVKRED
Specificity:	C14 ORF130 antibody was raised against the C terminal Of C14 rf130
Purification:	Purified

Target Details

Target:	UBR7
Alternative Name:	C14ORF130 (UBR7 Products)
Background:	The function of Chromosome 14 ORF protein is not widely studied, and is yet to be elucidated fully.

Target Details

Molecular Weight: 30 kDa (MW of target protein)

Application Details

Application Notes: WB: 1.25 µg/mL, IHC: 4-8 µg/mL
Optimal conditions should be determined by the investigator.

Comment: C14ORF130 Blocking Peptide, catalog no. 33R-2148, is also available for use as a blocking control in assays to test for specificity of this C14ORF130 antibody

Restrictions: For Research Use only

Handling

Format: Lyophilized

Reconstitution: Lyophilized powder. Add distilled water for a 1 mg/mL concentration of C10 RF130 antibody in PBS

Concentration: Lot specific

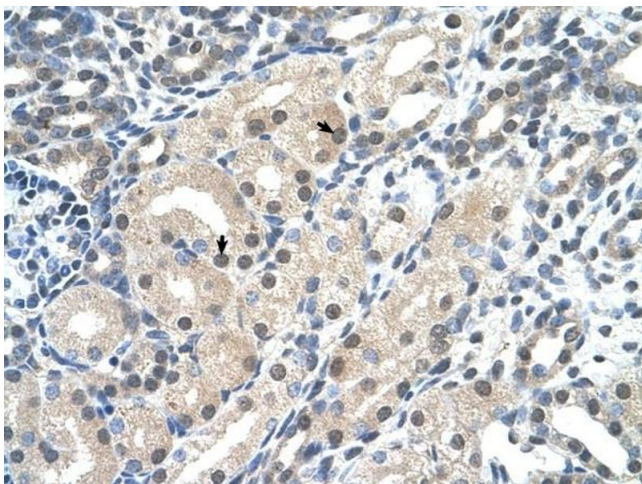
Buffer: PBS

Handling Advice: Avoid repeated freeze/thaw cycles.
Dilute only prior to immediate use.

Storage: 4 °C/-20 °C

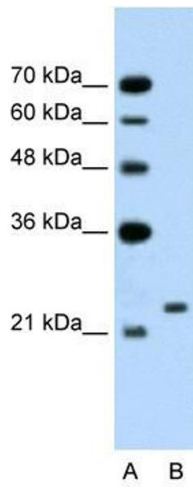
Storage Comment: Store at 2-8 °C for short periods. For longer periods of storage, store at -20 °C.

Images



Immunohistochemistry

Image 1. C14ORF130 antibody was used for immunohistochemistry at a concentration of 4-8 ug/ml to stain Epithelial cells of renal tubule (arrows) in Human Kidney. Magnification is at 400X



Western Blotting

Image 2. C14ORF130 antibody used at 1.25 ug/ml to detect target protein.