

Datasheet for ABIN629731 **anti-UBE2D1 antibody**



[Go to Product page](#)

1 Image

Overview

Quantity:	100 µg
Target:	UBE2D1
Reactivity:	Human, Mouse, Rat, Dog
Host:	Rabbit
Clonality:	Polyclonal
Conjugate:	This UBE2D1 antibody is un-conjugated
Application:	Western Blotting (WB)

Product Details

Immunogen:	UBE2 D1 antibody was raised using a synthetic peptide corresponding to a region with amino acids SQWSPALTVSKVLLSICSLLCDPNPDDPLVPDIAQIYKSDKEKYNRHARE
Purification:	Purified

Target Details

Target:	UBE2D1
Alternative Name:	UBE2D1 (UBE2D1 Products)
Background:	The modification of proteins with ubiquitin is an important cellular mechanism for targeting abnormal or short-lived proteins for degradation. Ubiquitination involves at least three classes of enzymes: ubiquitin-activating enzymes, or E1s, ubiquitin-conjugating enzymes, or E2s, and ubiquitin-protein ligases, or E3s. UBE2D1 is a member of the E2 ubiquitin-conjugating enzyme family. This enzyme is closely related to a stimulator of iron transport (SFT), and is up-regulated

Target Details

in hereditary hemochromatosis. It also functions in the ubiquitination of the tumor-suppressor protein p53 and the hypoxia-inducible transcription factor HIF1 alpha by interacting with the E1 ubiquitin-activating enzyme and the E3 ubiquitin-protein ligases.

Molecular Weight: 16 kDa (MW of target protein)

Pathways: [Activation of Innate immune Response, Toll-Like Receptors Cascades](#)

Application Details

Application Notes: WB: 1.25 µg/mL
Optimal conditions should be determined by the investigator.

Comment: UBE2D1 Blocking Peptide, catalog no. 33R-8734, is also available for use as a blocking control in assays to test for specificity of this UBE2D1 antibody

Restrictions: For Research Use only

Handling

Format: Lyophilized

Reconstitution: Lyophilized powder. Add distilled water for a 1 mg/mL concentration of UBE0 1 antibody in PBS

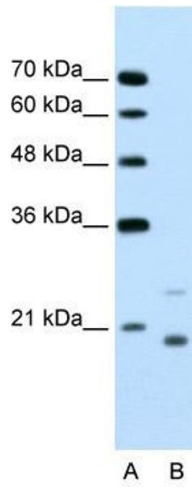
Concentration: Lot specific

Buffer: PBS

Handling Advice: Avoid repeated freeze/thaw cycles.

Storage: 4 °C/-20 °C

Storage Comment: Store at 2-8 °C for short periods. For longer periods of storage, store at -20 °C.



Western Blotting

Image 1. UBE2D1 antibody used at 1.25 ug/ml to detect target protein.