

## Datasheet for ABIN629733 **anti-ARIH1 antibody**



[Go to Product page](#)

### 1 Image

#### Overview

Quantity:	100 µg
Target:	ARIH1
Reactivity:	Human, Mouse, Dog, Zebrafish (Danio rerio)
Host:	Rabbit
Clonality:	Polyclonal
Conjugate:	This ARIH1 antibody is un-conjugated
Application:	Western Blotting (WB)

#### Product Details

Immunogen:	ARIH1 antibody was raised using a synthetic peptide corresponding to a region with amino acids ATEVLSGYLERDISQDSLQDIKQKVQDKYRYCESRRRVLLQHVHEGYEKD
Purification:	Purified

#### Target Details

Target:	ARIH1
Alternative Name:	ARIH1 ( <a href="#">ARIH1 Products</a> )
Background:	ARIH1 might act as an E3 ubiquitin-protein ligase, or as part of the E3 complex, which accepts ubiquitin from specific E2 ubiquitin-conjugating enzymes, such as UBE2L3/UBCM4, and then transfers it to substrates.
Molecular Weight:	61 kDa (MW of target protein)

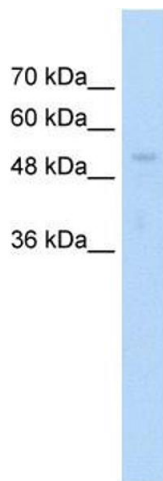
## Application Details

Application Notes:	WB: 1.25 µg/mL Optimal conditions should be determined by the investigator.
Comment:	ARIH1 Blocking Peptide, catalog no. 33R-1555, is also available for use as a blocking control in assays to test for specificity of this ARIH1 antibody
Restrictions:	For Research Use only

## Handling

Format:	Lyophilized
Reconstitution:	Lyophilized powder. Add distilled water for a 1 mg/mL concentration of ARIH1 antibody in PBS
Concentration:	Lot specific
Buffer:	PBS
Handling Advice:	Avoid repeated freeze/thaw cycles.
Storage:	4 °C/-20 °C
Storage Comment:	Store at 2-8 °C for short periods. For longer periods of storage, store at -20 °C.

## Images



### Western Blotting

**Image 1.** ARIH1 antibody used at 1.25 µg/ml to detect target protein.