

Datasheet for ABIN629737  
**anti-FBXL7 antibody (N-Term)**



[Go to Product page](#)

2 Images

## Overview

Quantity:	100 µg
Target:	FBXL7
Binding Specificity:	N-Term
Reactivity:	Human, Mouse, Rat
Host:	Rabbit
Clonality:	Polyclonal
Conjugate:	This FBXL7 antibody is un-conjugated
Application:	Western Blotting (WB), Immunohistochemistry (IHC)

## Product Details

Immunogen:	FBXL7 antibody was raised using the N terminal of FBXL7 corresponding to a region with amino acids IRLASRPQKEQASIDRLPDHSMVQIFSFLPTNQLCRCARVCRRWYNLAWD
Specificity:	FBXL7 antibody was raised against the N terminal of FBXL7
Purification:	Purified

## Target Details

Target:	FBXL7
Alternative Name:	FBXL7 ( <a href="#">FBXL7 Products</a> )
Background:	FBXL7 is a member of the F-box protein family which is characterized by an approximately 40 amino acid motif, the F-box. The F-box proteins constitute one of the four subunits of ubiquitin protein ligase complex called SCFs (SKP1-cullin-F-box), which function in phosphorylation-

## Target Details

---

dependent ubiquitination. The F-box proteins are divided into 3 classes: Fbws containing WD-40 domains, Fbls containing leucine-rich repeats, and Fbxs containing either different protein-protein interaction modules or no recognizable motifs.

Molecular Weight: 54 kDa (MW of target protein)

## Application Details

---

Application Notes: WB: 1.25 µg/mL, IHC: 4-8 µg/mL  
Optimal conditions should be determined by the investigator.

Comment: FBXL7 Blocking Peptide, catalog no. 33R-4136, is also available for use as a blocking control in assays to test for specificity of this FBXL7 antibody

Restrictions: For Research Use only

## Handling

---

Format: Lyophilized

Reconstitution: Lyophilized powder. Add distilled water for a 1 mg/mL concentration of FBXL7 antibody in PBS

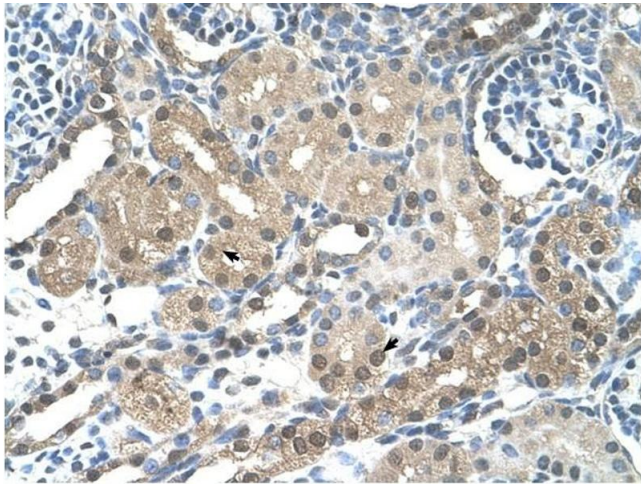
Concentration: Lot specific

Buffer: PBS

Handling Advice: Avoid repeated freeze/thaw cycles.  
Dilute only prior to immediate use.

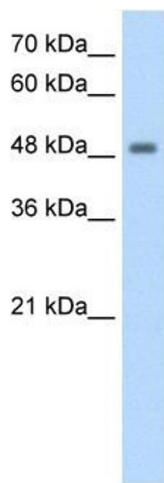
Storage: 4 °C/-20 °C

Storage Comment: Store at 2-8 °C for short periods. For longer periods of storage, store at -20 °C.



### Immunohistochemistry

**Image 1.** FBXL7 antibody was used for immunohistochemistry at a concentration of 4-8 ug/ml to stain Epithelial cells of renal tubule (arrows) in Human Kidney. Magnification is at 400X



### Western Blotting

**Image 2.** FBXL7 antibody used at 1.25 ug/ml to detect target protein.