

Datasheet for ABIN629745 **anti-MAT1A antibody (N-Term)**

3 Images



[Go to Product page](#)

Overview

Quantity:	100 µg
Target:	MAT1A
Binding Specificity:	N-Term
Reactivity:	Human, Mouse, Rat, Dog, Drosophila melanogaster, C. elegans
Host:	Rabbit
Clonality:	Polyclonal
Conjugate:	This MAT1A antibody is un-conjugated
Application:	Western Blotting (WB), Immunohistochemistry (IHC)

Product Details

Immunogen:	MAT1 A antibody was raised using the N terminal of MAT1 corresponding to a region with amino acids TSESVGEGHPDKICDQISDAVLDAHLKQDPNAKVACETVCKTGMVLLCGE
Specificity:	MAT1 A antibody was raised against the N terminal of MAT1
Purification:	Purified

Target Details

Target:	MAT1A
Alternative Name:	MAT1A (MAT1A Products)
Background:	MAT1A catalyzes the formation of S-adenosylmethionine from methionine and ATP. Methionine adenosyltransferase deficiency is caused by recessive and dominant mutations, the latter identified in autosomal dominant persistent hypermethioninemia.

Target Details

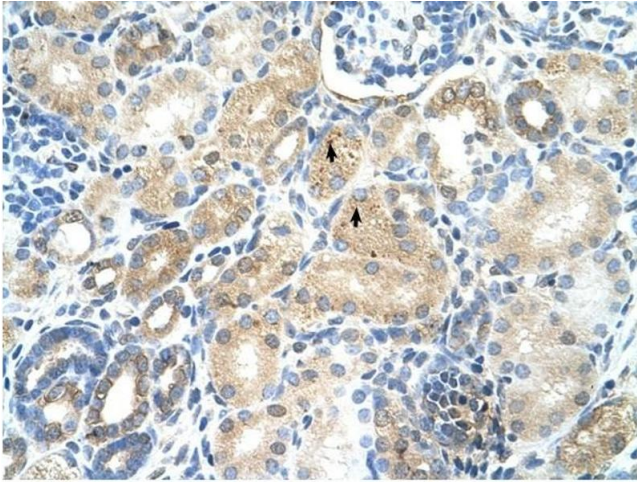
Molecular Weight:	43 kDa (MW of target protein)
Pathways:	Mitotic G1-G1/S Phases , M Phase , Ribonucleoside Biosynthetic Process , Methionine Biosynthetic Process

Application Details

Application Notes:	WB: 1.25 µg/mL, IHC: 4-8 µg/mL Optimal conditions should be determined by the investigator.
Comment:	MAT1A Blocking Peptide, catalog no. 33R-9282, is also available for use as a blocking control in assays to test for specificity of this MAT1A antibody
Restrictions:	For Research Use only

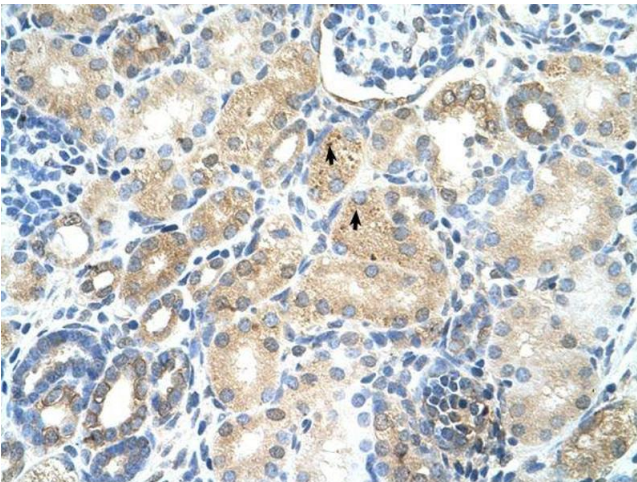
Handling

Format:	Lyophilized
Reconstitution:	Lyophilized powder. Add distilled water for a 1 mg/mL concentration of MAT0 antibody in PBS
Concentration:	Lot specific
Buffer:	PBS
Handling Advice:	Avoid repeated freeze/thaw cycles. Dilute only prior to immediate use.
Storage:	4 °C/-20 °C
Storage Comment:	Store at 2-8 °C for short periods. For longer periods of storage, store at -20 °C.



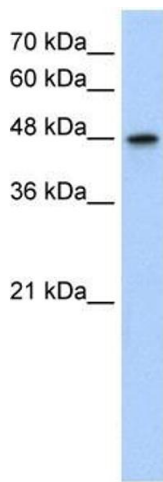
Immunohistochemistry

Image 1. MAT1A antibody was used for immunohistochemistry at a concentration of 4-8 ug/ml to stain Epithelial cells of renal tubule (arrows) in Human Kidney. Magnification is at 400X



Immunohistochemistry

Image 2. MAT1A antibody was used for immunohistochemistry at a concentration of 4-8 ug/ml. Magnification is at 400X



Western Blotting

Image 3. Western Blot showing MAT1A antibody used at a concentration of 1.25 ug/ml against Jurkat Cell Lysate