

Datasheet for ABIN629748 **anti-BHMT antibody (C-Term)**

3 Images



[Go to Product page](#)

Overview

Quantity:	100 µg
Target:	BHMT
Binding Specificity:	C-Term
Reactivity:	Human, Dog
Host:	Rabbit
Clonality:	Polyclonal
Conjugate:	This BHMT antibody is un-conjugated
Application:	Western Blotting (WB), Immunohistochemistry (IHC)

Product Details

Immunogen:	BHMT antibody was raised using the C terminal of BHMT corresponding to a region with amino acids KHGSWGSGLDMHTKPWVRARARKEYWENLRIASGRPYNPSMSKPDGWGVT
Specificity:	BHMT antibody was raised against the C terminal of BHMT
Purification:	Purified

Target Details

Target:	BHMT
Alternative Name:	BHMT (BHMT Products)
Background:	BHMT is a cytosolic enzyme that catalyzes the conversion of betaine and homocysteine to dimethylglycine and methionine, respectively. Defects in its gene could lead to hyperhomocyst(e)inemia, but such a defect has not yet been observed.

Target Details

Molecular Weight:	45 kDa (MW of target protein)
Pathways:	Methionine Biosynthetic Process

Application Details

Application Notes:	WB: 1.25 µg/mL, IHC: 4-8 µg/mL Optimal conditions should be determined by the investigator.
Comment:	BHMT Blocking Peptide, catalog no. 33R-4414, is also available for use as a blocking control in assays to test for specificity of this BHMT antibody
Restrictions:	For Research Use only

Handling

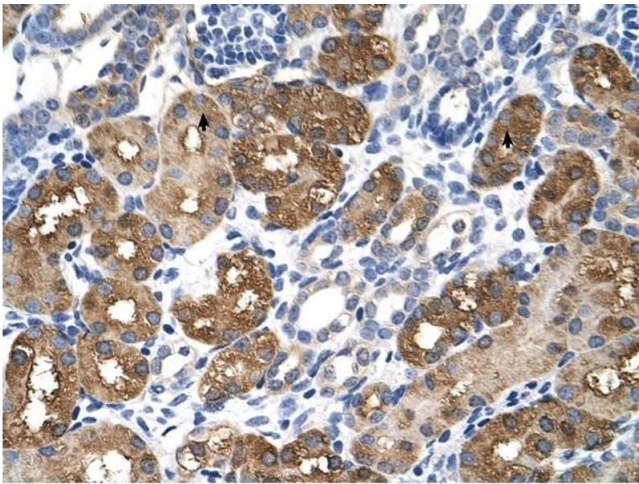
Format:	Lyophilized
Reconstitution:	Lyophilized powder. Add distilled water for a 1 mg/mL concentration of BHMT antibody in PBS
Concentration:	Lot specific
Buffer:	PBS
Handling Advice:	Avoid repeated freeze/thaw cycles. Dilute only prior to immediate use.
Storage:	4 °C/-20 °C
Storage Comment:	Store at 2-8 °C for short periods. For longer periods of storage, store at -20 °C.

Images



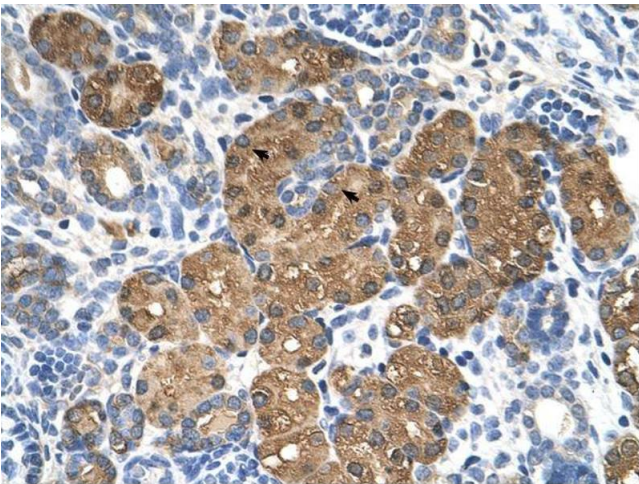
Western Blotting

Image 1. BHMT antibody used at 1.25 µg/ml to detect target protein.



Immunohistochemistry

Image 2. BHMT antibody was used for immunohistochemistry at a concentration of 4-8 ug/ml to stain Epithelial cells of renal tubule (arrows) in Human Kidney. Magnification is at 400X



Immunohistochemistry

Image 3. BHMT antibody was used for immunohistochemistry at a concentration of 4-8 ug/ml. Magnification is at 400X