

## Datasheet for ABIN629753 **anti-SBDS antibody (N-Term)**

### 2 Images



[Go to Product page](#)

### Overview

Quantity:	100 µg
Target:	SBDS
Binding Specificity:	N-Term
Reactivity:	Human, Mouse, Rat, Dog
Host:	Rabbit
Clonality:	Polyclonal
Conjugate:	This SBDS antibody is un-conjugated
Application:	Western Blotting (WB), Immunohistochemistry (IHC)

### Product Details

Immunogen:	SBDS antibody was raised using the N terminal of SBDS corresponding to a region with amino acids LQTHSVFVNVSKGQVAKKEDLISAFGTDDQTEICKQILTKGEVQVSDKER
Specificity:	SBDS antibody was raised against the N terminal of SBDS
Purification:	Purified

### Target Details

Target:	SBDS
Alternative Name:	SBDS ( <a href="#">SBDS Products</a> )
Background:	SBDS is a member of a highly conserved protein family that exists from archaea to vertebrates and plants. The protein may function in RNA metabolism. Mutations within its gene are associated with Shwachman-Bodian-Diamond syndrome.

## Target Details

Molecular Weight: 28 kDa (MW of target protein)

Pathways: [Ribonucleoprotein Complex Subunit Organization, Ribosome Assembly](#)

## Application Details

Application Notes: WB: 2.5 µg/mL, IHC: 4-8 µg/mL  
Optimal conditions should be determined by the investigator.

Comment: SBDS Blocking Peptide, catalog no. 33R-5342, is also available for use as a blocking control in assays to test for specificity of this SBDS antibody

Restrictions: For Research Use only

## Handling

Format: Lyophilized

Reconstitution: Lyophilized powder. Add distilled water for a 1 mg/mL concentration of SBDS antibody in PBS

Concentration: Lot specific

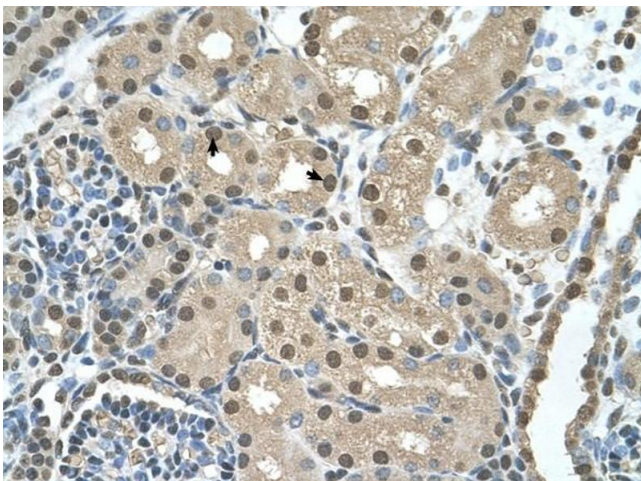
Buffer: PBS

Handling Advice: Avoid repeated freeze/thaw cycles.  
Dilute only prior to immediate use.

Storage: 4 °C/-20 °C

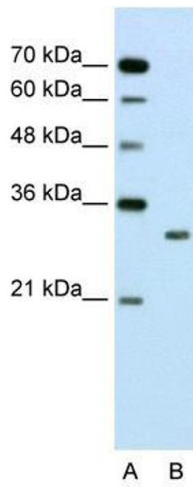
Storage Comment: Store at 2-8 °C for short periods. For longer periods of storage, store at -20 °C.

## Images



### Immunohistochemistry

**Image 1.** SBDS antibody was used for immunohistochemistry at a concentration of 4-8 µg/ml to stain Epithelial cells of renal tubule (arrows) in Human Kidney. Magnification is at 400X



### Western Blotting

**Image 2.** SBDS antibody used at 2.5 ug/ml to detect target protein.