

## Datasheet for ABIN629758 **anti-SIK1 antibody (N-Term)**

### 3 Images



[Go to Product page](#)

### Overview

Quantity:	100 µg
Target:	SIK1
Binding Specificity:	N-Term
Reactivity:	Human
Host:	Rabbit
Clonality:	Polyclonal
Conjugate:	This SIK1 antibody is un-conjugated
Application:	Western Blotting (WB), Immunohistochemistry (IHC)

### Product Details

Immunogen:	SNF1 LK antibody was raised using the N terminal of SNF1 K corresponding to a region with amino acids MVIMSEFSADPAGQGQGGQKPLRVGFYDIERTLGKGNFAVVKLARHRVTK
Specificity:	SNF1 LK antibody was raised against the N terminal of SNF1 K
Purification:	Purified

### Target Details

Target:	SIK1
Alternative Name:	SNF1LK ( <a href="#">SIK1 Products</a> )
Background:	SNF1LK play a transient role during the earliest stages of myocardial cell differentiation and/or primitive chamber formation and may also be important for the earliest stages of skeletal muscle growth and/or differentiation. It also plays a potential role in G2/M cell cycle regulation.

## Target Details

---

It inhibits CREB activity by phosphorylating and repressing the CREB-specific coactivators, CRTCC1-3.

Molecular Weight: 85 kDa (MW of target protein)

Pathways: [Regulation of Muscle Cell Differentiation](#), [Skeletal Muscle Fiber Development](#), [Regulation of Carbohydrate Metabolic Process](#)

## Application Details

---

Application Notes: WB: 1.25 µg/mL, IHC: 4-8 µg/mL  
Optimal conditions should be determined by the investigator.

Comment: SNF1LK Blocking Peptide, catalog no. 33R-6587, is also available for use as a blocking control in assays to test for specificity of this SNF1LK antibody

Restrictions: For Research Use only

## Handling

---

Format: Lyophilized

Reconstitution: Lyophilized powder. Add distilled water for a 1 mg/mL concentration of SNF0 K antibody in PBS

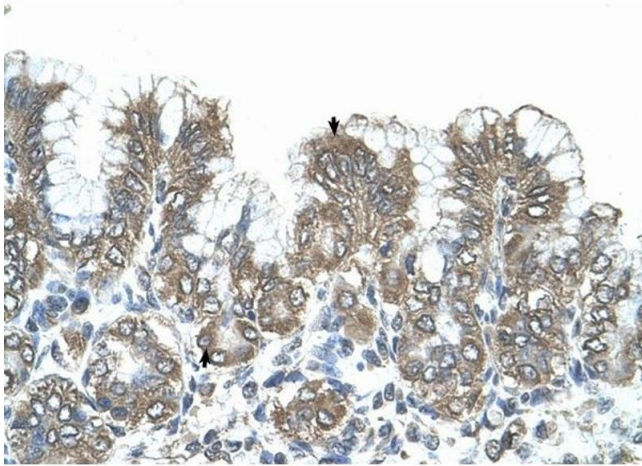
Concentration: Lot specific

Buffer: PBS

Handling Advice: Avoid repeated freeze/thaw cycles.  
Dilute only prior to immediate use.

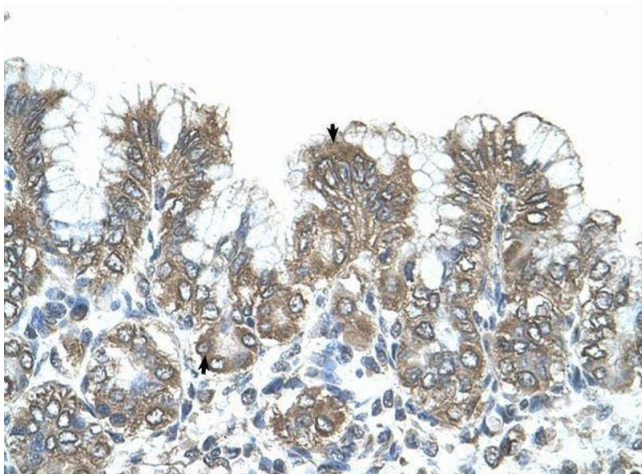
Storage: 4 °C/-20 °C

Storage Comment: Store at 2-8 °C for short periods. For longer periods of storage, store at -20 °C.



#### Immunohistochemistry

**Image 1.** SNF1LK antibody was used for immunohistochemistry at a concentration of 4-8 ug/ml to stain Surface mucous cells and Epithelial cells of fundic gland (arrows) in Human Stomach. Magnification is at 400X



#### Immunohistochemistry

**Image 2.** SNF1LK antibody was used for immunohistochemistry at a concentration of 4-8 ug/ml. Magnification is at 400X



#### Western Blotting

**Image 3.** SNF1LK antibody used at 1.25 ug/ml to detect target protein.