

Datasheet for ABIN629761  
**anti-SARDH antibody (Middle Region)**



[Go to Product page](#)

3 Images

## Overview

Quantity:	100 µg
Target:	SARDH
Binding Specificity:	Middle Region
Reactivity:	Mouse, Rat, Human, Dog, Zebrafish (Danio rerio)
Host:	Rabbit
Clonality:	Polyclonal
Conjugate:	This SARDH antibody is un-conjugated
Application:	Western Blotting (WB), Immunohistochemistry (IHC)

## Product Details

Immunogen:	SARDH antibody was raised using the middle region of SARDH corresponding to a region with amino acids DHPRWIRERSHESYAKNYSVVFPHDEPLAGRNMRRDPLHEELLGQGCVFQ
Specificity:	SARDH antibody was raised against the middle region of SARDH
Purification:	Purified

## Target Details

Target:	SARDH
Alternative Name:	SARDH ( <a href="#">SARDH Products</a> )
Background:	The protein encoded by this gene is an enzyme localized to the mitochondrial matrix which catalyzes the oxidative demethylation of sarcosine. This enzyme is distinct from another mitochondrial matrix enzyme, dimethylglycine dehydrogenase, which catalyzes a reaction

## Target Details

---

resulting in the formation of sarcosine. Mutations in this gene are associated with sarcosinemia.

Molecular Weight: 67 kDa (MW of target protein)

## Application Details

---

Application Notes: WB: 2.5 µg/mL, IHC: 4-8 µg/mL  
Optimal conditions should be determined by the investigator.

Comment: SARDH Blocking Peptide, catalog no. 33R-1982, is also available for use as a blocking control in assays to test for specificity of this SARDH antibody

Restrictions: For Research Use only

## Handling

---

Format: Lyophilized

Reconstitution: Lyophilized powder. Add distilled water for a 1 mg/mL concentration of SARDH antibody in PBS

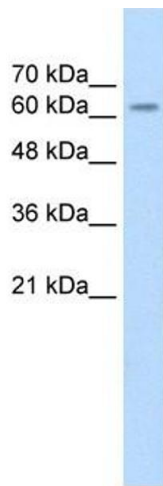
Concentration: Lot specific

Buffer: PBS

Handling Advice: Avoid repeated freeze/thaw cycles.  
Dilute only prior to immediate use.

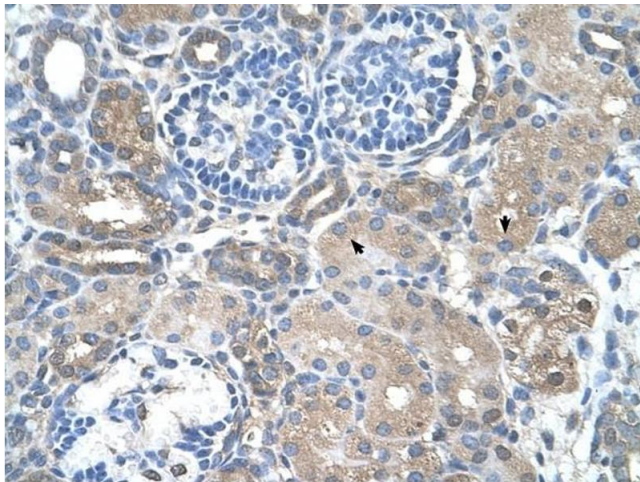
Storage: 4 °C/-20 °C

Storage Comment: Store at 2-8 °C for short periods. For longer periods of storage, store at -20 °C.



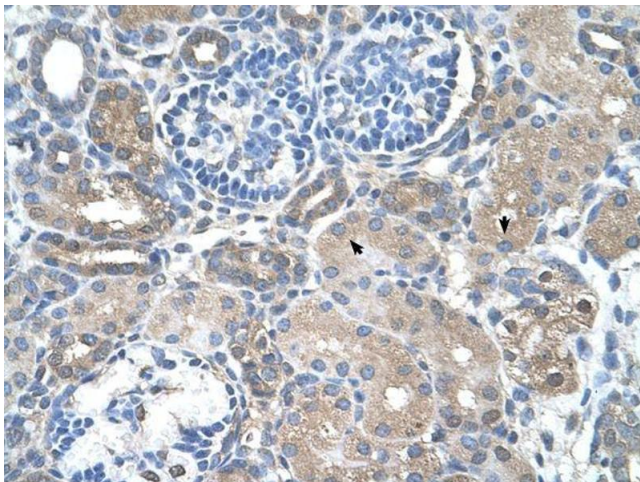
### Western Blotting

**Image 1.** SARDH antibody used at 2.5 ug/ml to detect target protein.



### Immunohistochemistry

**Image 2.** SARDH antibody was used for immunohistochemistry at a concentration of 4-8 ug/ml to stain Epithelial cells of renal tubule (arrows) in Human Kidney. Magnification is at 400X



### Immunohistochemistry

**Image 3.** SARDH antibody was used for immunohistochemistry at a concentration of 4-8 ug/ml. Magnification is at 400X