

Datasheet for ABIN629763

anti-DECR2 antibody (N-Term)[Go to Product page](#)**1** Image

Overview

Quantity:	100 µg
Target:	DECR2
Binding Specificity:	N-Term
Reactivity:	Human, Mouse, Rat, Dog, Zebrafish (Danio rerio)
Host:	Rabbit
Clonality:	Polyclonal
Conjugate:	This DECR2 antibody is un-conjugated
Application:	Western Blotting (WB)

Product Details

Immunogen:	DECR2 antibody was raised using the N terminal of DECR2 corresponding to a region with amino acids MAQPPPDVEGDDCLPAYRHLFCPDLLRDKVAFITGGGSGIGFRIAEIFMR
Specificity:	DECR2 antibody was raised against the N terminal of DECR2
Purification:	Purified

Target Details

Target:	DECR2
Alternative Name:	DECR2 (DECR2 Products)
Background:	DECR2 is auxiliary enzyme of beta-oxidation. It participates in the degradation of unsaturated fatty enoyl-CoA esters having double bonds in both even- and odd-numbered positions in peroxisome. It catalyzes the NADP-dependent reduction of 2,4-dienoyl-CoA to yield trans-3-

Target Details

enoyl-CoA and has activity towards short and medium chain 2,4-dienoyl-CoAs, but also towards 2,4,7,10,13,16,19-docosaheptaenoyl-CoA, suggesting that it does not constitute a rate limiting step in the peroxisomal degradation of docosahexaenoic acid.

Molecular Weight: 32 kDa (MW of target protein)

Application Details

Application Notes: WB: 5 µg/mL
Optimal conditions should be determined by the investigator.

Comment: DECR2 Blocking Peptide, catalog no. 33R-5726, is also available for use as a blocking control in assays to test for specificity of this DECR2 antibody

Restrictions: For Research Use only

Handling

Format: Lyophilized

Reconstitution: Lyophilized powder. Add distilled water for a 1 mg/mL concentration of DECR2 antibody in PBS

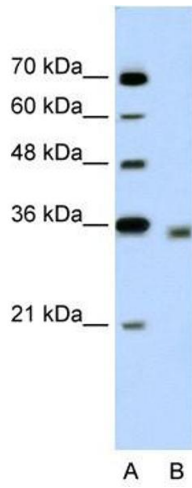
Concentration: Lot specific

Buffer: PBS

Handling Advice: Avoid repeated freeze/thaw cycles.
Dilute only prior to immediate use.

Storage: 4 °C/-20 °C

Storage Comment: Store at 2-8 °C for short periods. For longer periods of storage, store at -20 °C.



Western Blotting

Image 1. DECR2 antibody used at 5 ug/ml to detect target protein.