

Datasheet for ABIN629765  
**anti-PCYT2 antibody (C-Term)**



[Go to Product page](#)

1 Image

## Overview

Quantity:	100 µg
Target:	PCYT2
Binding Specificity:	C-Term
Reactivity:	Human, Mouse
Host:	Rabbit
Clonality:	Polyclonal
Conjugate:	This PCYT2 antibody is un-conjugated
Application:	Western Blotting (WB)

## Product Details

Immunogen:	PCYT2 antibody was raised using the C terminal of PCYT2 corresponding to a region with amino acids KVDLVCHGKTEIIPDRDGSDPYQEPKRRGIFRQIDSGSNLTTDLIVQRII
Specificity:	PCYT2 antibody was raised against the C terminal of PCYT2
Purification:	Purified

## Target Details

Target:	PCYT2
Alternative Name:	PCYT2 ( <a href="#">PCYT2 Products</a> )
Background:	PCYT2 is an enzyme that catalyzes the formation of CDP-ethanolamine from CTP and phosphoethanolamine in the Kennedy pathway of phospholipid synthesis. Alternative splicing results in multiple transcript variants.

## Target Details

---

Molecular Weight: 43 kDa (MW of target protein)

## Application Details

---

Application Notes: WB: 2.5 µg/mL  
Optimal conditions should be determined by the investigator.

Comment: PCYT2 Blocking Peptide, catalog no. 33R-4702, is also available for use as a blocking control in assays to test for specificity of this PCYT2 antibody

Restrictions: For Research Use only

## Handling

---

Format: Lyophilized

Reconstitution: Lyophilized powder. Add distilled water for a 1 mg/mL concentration of PCYT2 antibody in PBS

Concentration: Lot specific

Buffer: PBS

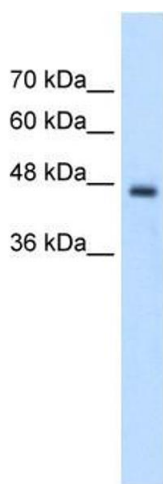
Handling Advice: Avoid repeated freeze/thaw cycles.  
Dilute only prior to immediate use.

Storage: 4 °C/-20 °C

Storage Comment: Store at 2-8 °C for short periods. For longer periods of storage, store at -20 °C.

## Images

---



### Western Blotting

**Image 1.** PCYT2 antibody used at 2.5 ug/ml to detect target protein.