

Datasheet for ABIN629766
anti-ALT antibody

3 Images



[Go to Product page](#)

Overview

Quantity:	100 µg
Target:	ALT
Reactivity:	Human, Rat, Mouse, Dog
Host:	Rabbit
Clonality:	Polyclonal
Conjugate:	This ALT antibody is un-conjugated
Application:	Western Blotting (WB), Immunohistochemistry (IHC)

Product Details

Immunogen:	GPT antibody was raised using a synthetic peptide corresponding to a region with amino acids RRVEYAVRGPVQRALELEQLRQGVKKPFTEVIRANIGDAQAMGQRPIT
Purification:	Purified

Target Details

Target:	ALT
Alternative Name:	GPT (ALT Products)
Background:	GPT participates in cellular nitrogen metabolism and also in liver gluconeogenesis starting with precursors transported from skeletal muscles.
Molecular Weight:	55 kDa (MW of target protein)

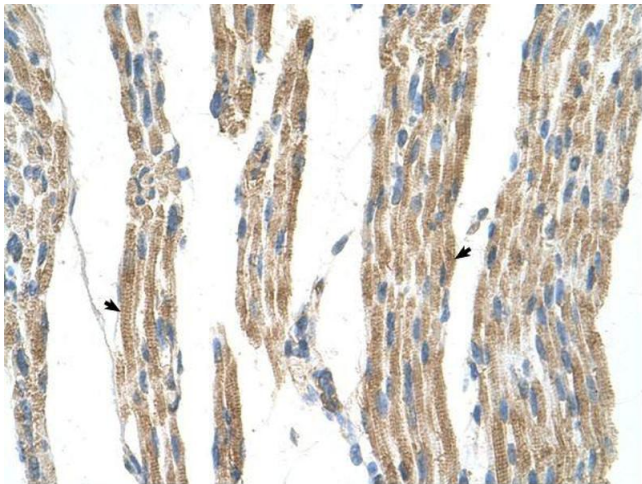
Application Details

Application Notes:	WB: 5 µg/mL, IHC: 4-8 µg/mL Optimal conditions should be determined by the investigator.
Comment:	GPT Blocking Peptide, catalog no. 33R-8167, is also available for use as a blocking control in assays to test for specificity of this GPT antibody
Restrictions:	For Research Use only

Handling

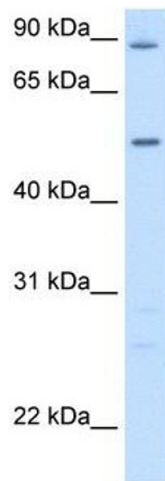
Format:	Lyophilized
Reconstitution:	Lyophilized powder. Add distilled water for a 1 mg/mL concentration of GPT antibody in PBS
Concentration:	Lot specific
Buffer:	PBS
Handling Advice:	Avoid repeated freeze/thaw cycles.
Storage:	4 °C/-20 °C
Storage Comment:	Store at 2-8 °C for short periods. For longer periods of storage, store at -20 °C.

Images



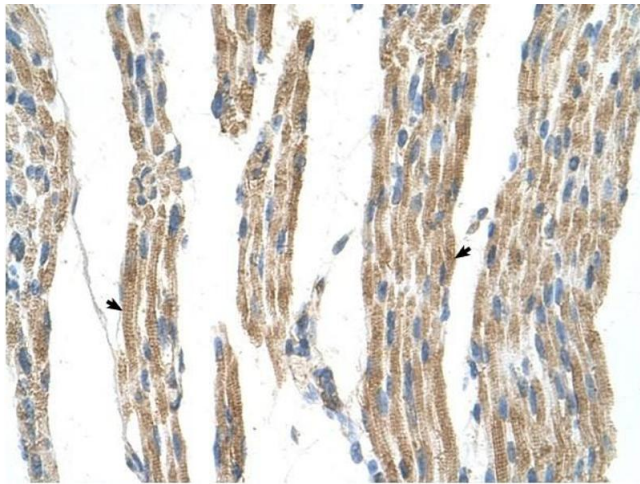
Immunohistochemistry

Image 1. GPT antibody was used for immunohistochemistry at a concentration of 4-8 µg/ml. Magnification is at 400X



Western Blotting

Image 2. GPT antibody used at 5 ug/ml to detect target protein.



Immunohistochemistry

Image 3. GPT antibody was used for immunohistochemistry at a concentration of 4-8 ug/ml to stain Skeletal muscle cells (arrows) in Human Muscle. Magnification is at 400X