

Datasheet for ABIN629768
anti-SGPP2 antibody (C-Term)



[Go to Product page](#)

2 Images

Overview

| | |
|----------------------|---|
| Quantity: | 100 µg |
| Target: | SGPP2 |
| Binding Specificity: | C-Term |
| Reactivity: | Human |
| Host: | Rabbit |
| Clonality: | Polyclonal |
| Conjugate: | This SGPP2 antibody is un-conjugated |
| Application: | Western Blotting (WB), Immunohistochemistry (IHC) |

Product Details

| | |
|---------------|--|
| Immunogen: | SGPP2 antibody was raised using the C terminal of SGPP2 corresponding to a region with amino acids SKPAESLPVIQNIPLTTYMLVLGLTKFAVGIVLILLVRQLVQNLSLQVL |
| Specificity: | SGPP2 antibody was raised against the C terminal of SGPP2 |
| Purification: | Purified |

Target Details

| | |
|-------------------|--|
| Target: | SGPP2 |
| Alternative Name: | SGPP2 (SGPP2 Products) |
| Background: | In vitro, SGPP2 has high phosphohydrolase activity against dihydrosphingosine-1-phosphate and sphingosine-1-phosphate (S1P). |

Target Details

Molecular Weight: 37 kDa (MW of target protein)

Application Details

Application Notes: WB: 2.5 µg/mL, IHC: 4-8 µg/mL
Optimal conditions should be determined by the investigator.

Comment: SGPP2 Blocking Peptide, catalog no. 33R-8562, is also available for use as a blocking control in assays to test for specificity of this SGPP2 antibody

Restrictions: For Research Use only

Handling

Format: Lyophilized

Reconstitution: Lyophilized powder. Add distilled water for a 1 mg/mL concentration of SGPP2 antibody in PBS

Concentration: Lot specific

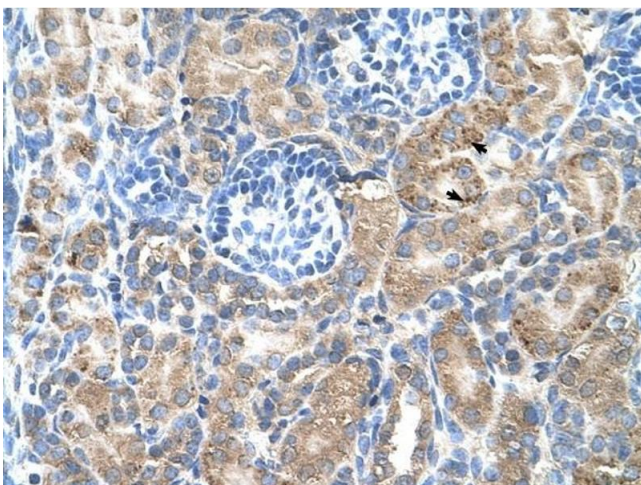
Buffer: PBS

Handling Advice: Avoid repeated freeze/thaw cycles.
Dilute only prior to immediate use.

Storage: 4 °C/-20 °C

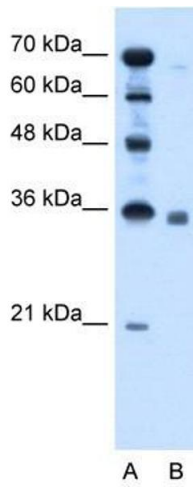
Storage Comment: Store at 2-8 °C for short periods. For longer periods of storage, store at -20 °C.

Images



Immunohistochemistry

Image 1. SGPP2 antibody was used for immunohistochemistry at a concentration of 4-8 ug/ml to stain Epithelial cells of renal tubule (arrows) in Human Kidney. Magnification is at 400X



Western Blotting

Image 2. SGPP2 antibody used at 2.5 ug/ml to detect target protein.