

Datasheet for ABIN629770 **anti-ACTR2 antibody**

3 Images



[Go to Product page](#)

Overview

Quantity:	100 µg
Target:	ACTR2
Reactivity:	Human, Mouse, Rat, Dog
Host:	Rabbit
Clonality:	Polyclonal
Conjugate:	This ACTR2 antibody is un-conjugated
Application:	Western Blotting (WB), Immunohistochemistry (IHC)

Product Details

Immunogen:	ACTR2 antibody was raised using a synthetic peptide corresponding to a region with amino acids NGIVRNWDDMKHLWDYTFGPEKLNIDTRNCKILLTEPPMNPTKNREKIVE
Purification:	Purified

Target Details

Target:	ACTR2
Alternative Name:	ACTR2 (ACTR2 Products)
Background:	ACTR2 is known to be a major constituent of the ARP2/3 complex. This complex is located at the cell surface and is essential to cell shape and motility through lamellipodial actin assembly and protrusion.
Molecular Weight:	45 kDa (MW of target protein)
Pathways:	RTK Signaling, Regulation of Actin Filament Polymerization

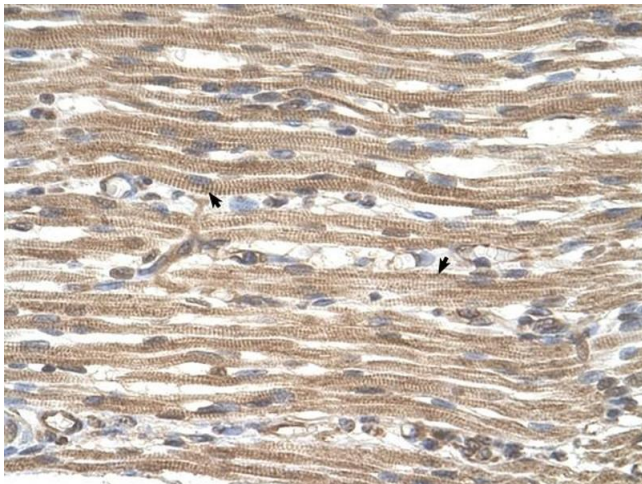
Application Details

Application Notes:	WB: 2.5 µg/mL, IHC: 4-8 µg/mL Optimal conditions should be determined by the investigator.
Comment:	ACTR2 Blocking Peptide, catalog no. 33R-6704, is also available for use as a blocking control in assays to test for specificity of this ACTR2 antibody
Restrictions:	For Research Use only

Handling

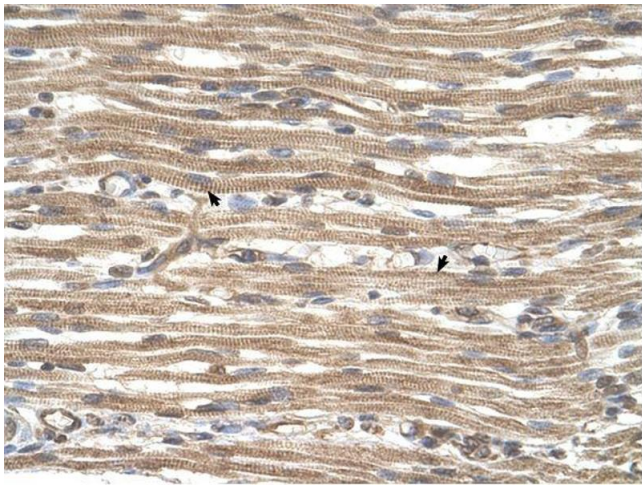
Format:	Lyophilized
Reconstitution:	Lyophilized powder. Add distilled water for a 1 mg/mL concentration of ACTR2 antibody in PBS
Concentration:	Lot specific
Buffer:	PBS
Handling Advice:	Avoid repeated freeze/thaw cycles.
Storage:	4 °C/-20 °C
Storage Comment:	Store at 2-8 °C for short periods. For longer periods of storage, store at -20 °C.

Images



Immunohistochemistry

Image 1. ACTR2 antibody was used for immunohistochemistry at a concentration of 4-8 ug/ml to stain Skeletal muscle cells (arrows] in Human Muscle. Magnification is at 400X



Immunohistochemistry

Image 2. ACTR2 antibody was used for immunohistochemistry at a concentration of 4-8 ug/ml. Magnification is at 400X



Western Blotting

Image 3. ACTR2 antibody used at 2.5 ug/ml to detect target protein.