

Datasheet for ABIN629773  
**anti-EEF1G antibody (N-Term)**



[Go to Product page](#)

1 Image

## Overview

Quantity:	100 µg
Target:	EEF1G
Binding Specificity:	N-Term
Reactivity:	Human, Mouse, Rat
Host:	Rabbit
Clonality:	Polyclonal
Conjugate:	This EEF1G antibody is un-conjugated
Application:	Western Blotting (WB)

## Product Details

Immunogen:	EEF1 G antibody was raised using the N terminal of EEF1 corresponding to a region with amino acids AAQYSGAQVRVLSAPPHFHFQGQTNRTPEFLRKFPAGKVPAPFEGDDGFCVF
Specificity:	EEF1 G antibody was raised against the N terminal of EEF1
Purification:	Purified

## Target Details

Target:	EEF1G
Alternative Name:	EEF1G ( <a href="#">EEF1G Products</a> )
Background:	EEF1G is a subunit of the elongation factor-1 complex, which is responsible for the enzymatic delivery of aminoacyl tRNAs to the ribosome. This subunit contains an N-terminal glutathione transferase domain, which may be involved in regulating the assembly of multisubunit

## Target Details

complexes containing this elongation factor and aminoacyl-tRNA synthetases.

Molecular Weight: 50 kDa (MW of target protein)

## Application Details

Application Notes: WB: 1.25 µg/mL

Optimal conditions should be determined by the investigator.

Comment: EEF1G Blocking Peptide, catalog no. 33R-1044, is also available for use as a blocking control in assays to test for specificity of this EEF1G antibody

Restrictions: For Research Use only

## Handling

Format: Lyophilized

Reconstitution: Lyophilized powder. Add distilled water for a 1 mg/mL concentration of EEF0 antibody in PBS

Concentration: Lot specific

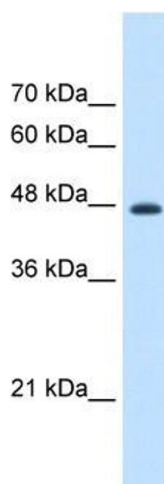
Buffer: PBS

Handling Advice: Avoid repeated freeze/thaw cycles.  
Dilute only prior to immediate use.

Storage: 4 °C/-20 °C

Storage Comment: Store at 2-8 °C for short periods. For longer periods of storage, store at -20 °C.

## Images



### Western Blotting

**Image 1.** EEF1G antibody used at 1.25 µg/ml to detect target protein.