

Datasheet for ABIN629776
anti-SEPHS1 antibody (C-Term)



[Go to Product page](#)

1 Image

Overview

Quantity:	100 µg
Target:	SEPHS1
Binding Specificity:	C-Term
Reactivity:	Human, Mouse, Rat
Host:	Rabbit
Clonality:	Polyclonal
Conjugate:	This SEPHS1 antibody is un-conjugated
Application:	Western Blotting (WB)

Product Details

Immunogen:	SEPHS1 antibody was raised using the C terminal of SEPHS1 corresponding to a region with amino acids PKYGEHGQAWIIGIVEKGNRTARIIDKPRIIEVAPQVATQNVNPTPGATS
Specificity:	SEPHS1 antibody was raised against the C terminal of SEPHS1
Purification:	Purified

Target Details

Target:	SEPHS1
Alternative Name:	SEPHS1 (SEPHS1 Products)
Background:	SEPHS1 is an enzyme that synthesizes selenophosphate from selenide and ATP. Selenophosphate is the selenium donor used to synthesize selenocysteine, which is co-translationally incorporated into selenoproteins at in-frame UGA codons.

Target Details

Molecular Weight: 43 kDa (MW of target protein)

Application Details

Application Notes: WB: 5 µg/mL
Optimal conditions should be determined by the investigator.

Comment: SEPHS1 Blocking Peptide, catalog no. 33R-7181, is also available for use as a blocking control in assays to test for specificity of this SEPHS1 antibody

Restrictions: For Research Use only

Handling

Format: Lyophilized

Reconstitution: Lyophilized powder. Add distilled water for a 1 mg/mL concentration of SEPHS1 antibody in PBS

Concentration: Lot specific

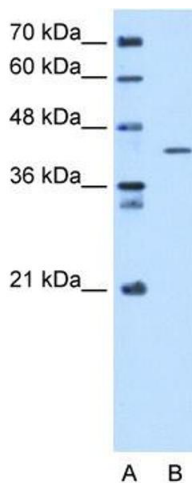
Buffer: PBS

Handling Advice: Avoid repeated freeze/thaw cycles.
Dilute only prior to immediate use.

Storage: 4 °C/-20 °C

Storage Comment: Store at 2-8 °C for short periods. For longer periods of storage, store at -20 °C.

Images



Western Blotting

Image 1. SEPHS1 antibody used at 5 ug/ml to detect target protein.