

Datasheet for ABIN629777 **anti-GMPPB antibody (C-Term)**

3 Images



[Go to Product page](#)

Overview

Quantity:	100 µg
Target:	GMPPB
Binding Specificity:	C-Term
Reactivity:	Human, Mouse, Rat
Host:	Rabbit
Clonality:	Polyclonal
Conjugate:	This GMPPB antibody is un-conjugated
Application:	Western Blotting (WB), Immunohistochemistry (IHC)

Product Details

Immunogen:	GMPPB antibody was raised using the C terminal of GMPPB corresponding to a region with amino acids RCRVGQWVRMENVTVLGEDVIVNDELYLNGASVLPKHSIGESVPEPRIIM
Specificity:	GMPPB antibody was raised against the C terminal of GMPPB
Purification:	Purified

Target Details

Target:	GMPPB
Alternative Name:	GMPPB (GMPPB Products)
Background:	GMPPB is a GDP-mannose pyrophosphorylase. This enzyme catalyzes the reaction which converts mannose-1-phosphate and GTP to GDP-mannose which is involved in the production of N-linked oligosaccharides.

Target Details

Molecular Weight: 43 kDa (MW of target protein)

Application Details

Application Notes: WB: 5 µg/mL, IHC: 4-8 µg/mL
Optimal conditions should be determined by the investigator.

Comment: GMPPB Blocking Peptide, catalog no. 33R-7838, is also available for use as a blocking control in assays to test for specificity of this GMPPB antibody

Restrictions: For Research Use only

Handling

Format: Lyophilized

Reconstitution: Lyophilized powder. Add distilled water for a 1 mg/mL concentration of GMPPB antibody in PBS

Concentration: Lot specific

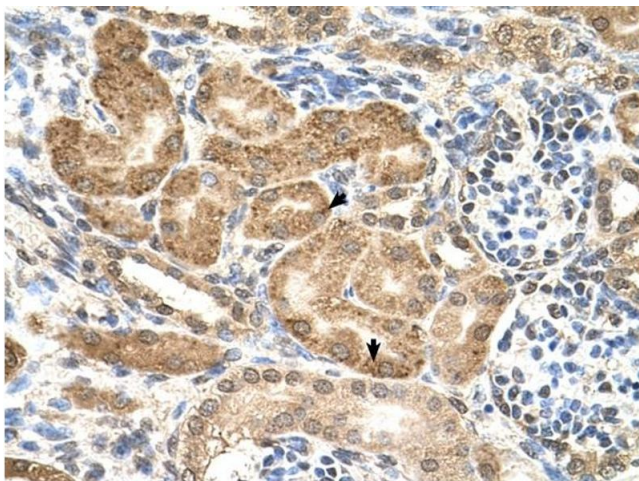
Buffer: PBS

Handling Advice: Avoid repeated freeze/thaw cycles.
Dilute only prior to immediate use.

Storage: 4 °C/-20 °C

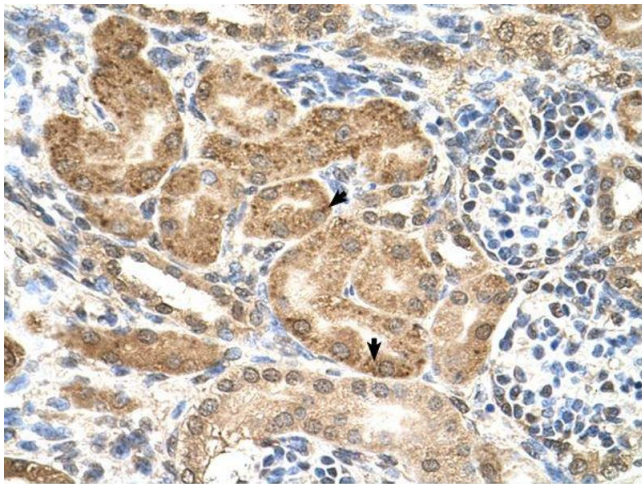
Storage Comment: Store at 2-8 °C for short periods. For longer periods of storage, store at -20 °C.

Images



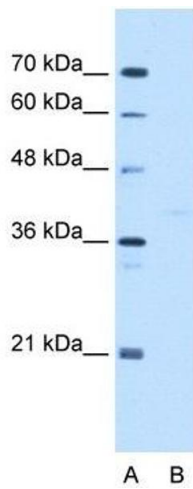
Immunohistochemistry

Image 1. GMPPB antibody was used for immunohistochemistry at a concentration of 4-8 ug/ml to stain Epithelial cells of renal tubule (arrows) in Human Kidney. Magnification is at 400X



Immunohistochemistry

Image 2. GMPPB antibody was used for immunohistochemistry at a concentration of 4-8 ug/ml. Magnification is at 400X



Western Blotting

Image 3. GMPPB antibody used at 5 ug/ml to detect target protein.