

## Datasheet for ABIN629789 **anti-GIPC2 antibody (N-Term)**

### 2 Images



[Go to Product page](#)

### Overview

Quantity:	100 µg
Target:	GIPC2
Binding Specificity:	N-Term
Reactivity:	Human
Host:	Rabbit
Clonality:	Polyclonal
Conjugate:	This GIPC2 antibody is un-conjugated
Application:	Western Blotting (WB), Immunohistochemistry (IHC)

### Product Details

Immunogen:	GIPC2 antibody was raised using the N terminal of GIPC2 corresponding to a region with amino acids MPLKLRGKKKAKSKETAGLVEGEPTGAGGGSLASRAPARRLVFHAQLAH
Specificity:	GIPC2 antibody was raised against the N terminal of GIPC2
Purification:	Purified

### Target Details

Target:	GIPC2
Alternative Name:	GIPC2 ( <a href="#">GIPC2 Products</a> )
Background:	GIPC1/GIPC, GIPC2, and GIPC3 are a family of central PDZ-domain proteins. GIPC2 might play important roles in human gastric cancer through modulation of growth factor signaling or cell adhesion. GIPC1, GIPC2 and GIPC3 might play key roles in carcinogenesis and embryogenesis

## Target Details

through modulation of growth factor signaling and cell adhesion.

Molecular Weight: 35 kDa (MW of target protein)

## Application Details

Application Notes: WB: 1.25 µg/mL, IHC: 4-8 µg/mL  
Optimal conditions should be determined by the investigator.

Comment: GIPC2 Blocking Peptide, catalog no. 33R-6291, is also available for use as a blocking control in assays to test for specificity of this GIPC2 antibody

Restrictions: For Research Use only

## Handling

Format: Lyophilized

Reconstitution: Lyophilized powder. Add distilled water for a 1 mg/mL concentration of GIPC2 antibody in PBS

Concentration: Lot specific

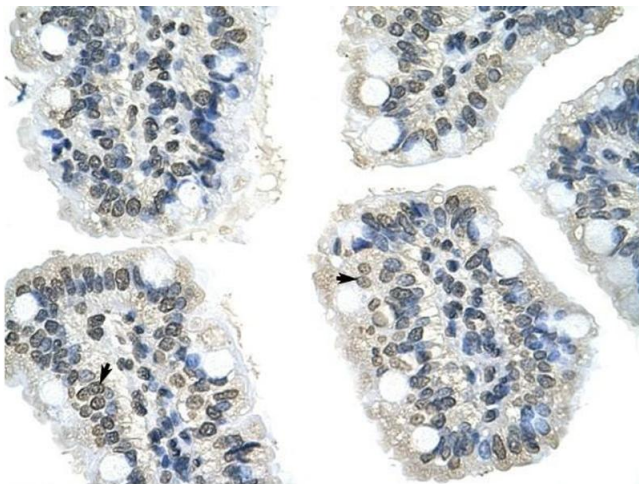
Buffer: PBS

Handling Advice: Avoid repeated freeze/thaw cycles.  
Dilute only prior to immediate use.

Storage: 4 °C/-20 °C

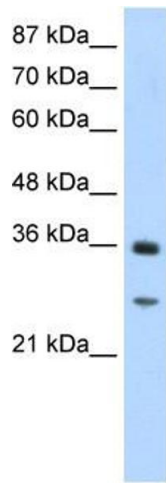
Storage Comment: Store at 2-8 °C for short periods. For longer periods of storage, store at -20 °C.

## Images



### Immunohistochemistry

**Image 1.** GIPC2 antibody was used for immunohistochemistry at a concentration of 4-8 µg/ml to stain Epithelial cells of intestinal villus (arrows) in Human Intestine. Magnification is at 400X



### Western Blotting

**Image 2.** GIPC2 antibody used at 1.25 ug/ml to detect target protein.