

Datasheet for ABIN629795 **anti-FBP1 antibody (N-Term)**

3 Images



[Go to Product page](#)

Overview

Quantity:	100 µg
Target:	FBP1
Binding Specificity:	N-Term
Reactivity:	Human, Mouse
Host:	Rabbit
Clonality:	Polyclonal
Conjugate:	This FBP1 antibody is un-conjugated
Application:	Western Blotting (WB), Immunohistochemistry (IHC)

Product Details

Immunogen:	FBP1 antibody was raised using the N terminal of FBP1 corresponding to a region with amino acids YVVCFDPLDGSSNIDCLVSVGTFIYRKKSTDEPSEKDALQPGRNLVAA
Specificity:	FBP1 antibody was raised against the N terminal of FBP1
Purification:	Purified

Target Details

Target:	FBP1
Alternative Name:	FBP1 (FBP1 Products)
Background:	Fructose-1,6-bisphosphatase 1, a gluconeogenesis regulatory enzyme, catalyzes the hydrolysis of fructose 1,6-bisphosphate to fructose 6-phosphate and inorganic phosphate. Fructose-1,6-diphosphatase deficiency is associated with hypoglycemia and metabolic acidosis. Fructose-

Target Details

1,6-bisphosphatase 1, a gluconeogenesis regulatory enzyme, catalyzes the hydrolysis of fructose 1,6-bisphosphate to fructose 6-phosphate and inorganic phosphate. Fructose-1,6-diphosphatase deficiency is associated with hypoglycemia and metabolic acidosis.

Molecular Weight: 37 kDa (MW of target protein)

Pathways: [Cellular Glucan Metabolic Process](#), [Regulation of Carbohydrate Metabolic Process](#), [Dicarboxylic Acid Transport](#)

Application Details

Application Notes: WB: 1.25 µg/mL, IHC: 4-8 µg/mL
Optimal conditions should be determined by the investigator.

Comment: FBP1 Blocking Peptide, catalog no. 33R-10289, is also available for use as a blocking control in assays to test for specificity of this FBP1 antibody

Restrictions: For Research Use only

Handling

Format: Lyophilized

Reconstitution: Lyophilized powder. Add distilled water for a 1 mg/mL concentration of FBP1 antibody in PBS

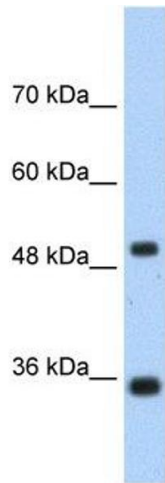
Concentration: Lot specific

Buffer: PBS

Handling Advice: Avoid repeated freeze/thaw cycles.
Dilute only prior to immediate use.

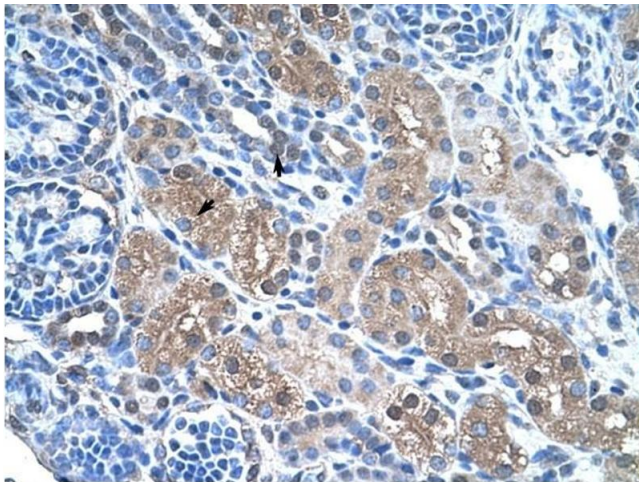
Storage: 4 °C/-20 °C

Storage Comment: Store at 2-8 °C for short periods. For longer periods of storage, store at -20 °C.



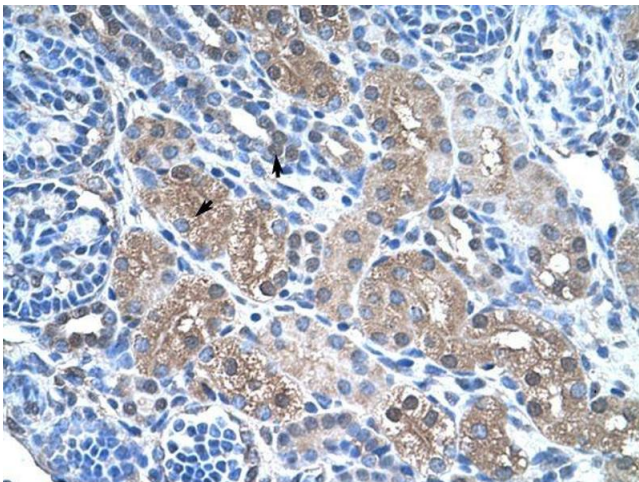
Western Blotting

Image 1. FBP1 antibody used at 1.25 ug/ml to detect target protein.



Immunohistochemistry

Image 2. FBP1 antibody was used for immunohistochemistry at a concentration of 4-8 ug/ml to stain Epithelial cells of renal tubule (arrows) in Human Kidney. Magnification is at 400X



Immunohistochemistry

Image 3. FBP1 antibody was used for immunohistochemistry at a concentration of 4-8 ug/ml. Magnification is at 400X