

Datasheet for ABIN629799
anti-PSD3 antibody (Middle Region)



[Go to Product page](#)

2 Images

Overview

Quantity:	100 µg
Target:	PSD3
Binding Specificity:	Middle Region
Reactivity:	Human, Mouse, Rat
Host:	Rabbit
Clonality:	Polyclonal
Conjugate:	This PSD3 antibody is un-conjugated
Application:	Western Blotting (WB), Immunohistochemistry (IHC)

Product Details

Immunogen:	PSD3 antibody was raised using the middle region of PSD3 corresponding to a region with amino acids SDVAKHLGKNNFEKSLVAEEYLKFFDFTGMTLDQSLRYFFKAFSLVGETQ
Specificity:	PSD3 antibody was raised against the middle region of PSD3
Purification:	Purified

Target Details

Target:	PSD3
Alternative Name:	PSD3 (PSD3 Products)
Background:	PSD3 is a guanine nucleotide exchange factor for ARF6.
Molecular Weight:	56 kDa (MW of target protein)

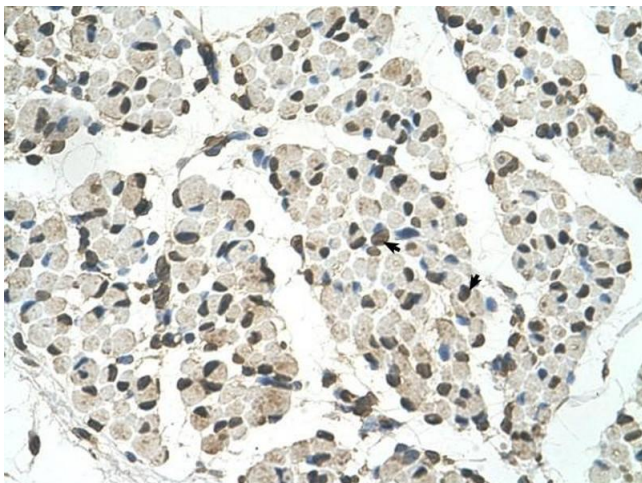
Application Details

Application Notes:	WB: 2.5 µg/mL, IHC: 4-8 µg/mL Optimal conditions should be determined by the investigator.
Comment:	PSD3 Blocking Peptide, catalog no. 33R-8378, is also available for use as a blocking control in assays to test for specificity of this PSD3 antibody
Restrictions:	For Research Use only

Handling

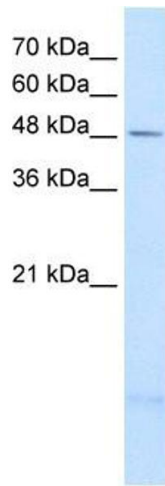
Format:	Lyophilized
Reconstitution:	Lyophilized powder. Add distilled water for a 1 mg/mL concentration of PSD3 antibody in PBS
Concentration:	Lot specific
Buffer:	PBS
Handling Advice:	Avoid repeated freeze/thaw cycles. Dilute only prior to immediate use.
Storage:	4 °C/-20 °C
Storage Comment:	Store at 2-8 °C for short periods. For longer periods of storage, store at -20 °C.

Images



Immunohistochemistry

Image 1. PSD3 antibody was used for immunohistochemistry at a concentration of 4-8 ug/ml to stain Skeletal muscle cells (arrows) in Human Muscle. Magnification is at 400X



Western Blotting

Image 2. PSD3 antibody used at 2.5 ug/ml to detect target protein.