

Datasheet for ABIN629803 **anti-PKLR antibody (N-Term)**

3 Images



[Go to Product page](#)

Overview

Quantity:	100 µg
Target:	PKLR
Binding Specificity:	N-Term
Reactivity:	Human, Mouse, Rat, Dog, C. elegans
Host:	Rabbit
Clonality:	Polyclonal
Conjugate:	This PKLR antibody is un-conjugated
Application:	Western Blotting (WB), Immunohistochemistry (IHC)

Product Details

Immunogen:	PKLR antibody was raised using the N terminal of PKLR corresponding to a region with amino acids STSIIATIGPASRSVERLKEMIKAGMNIARLNFSHGSHEYHAESIANVRE
Specificity:	PKLR antibody was raised against the N terminal of PKLR
Purification:	Purified

Target Details

Target:	PKLR
Alternative Name:	PKLR (PKLR Products)
Background:	PKLR is a pyruvate kinase that catalyzes the production of phosphoenolpyruvate from pyruvate and ATP. Defects in this enzyme, due to gene mutations or genetic variations, are the common cause of chronic hereditary nonspherocytic hemolytic anemia (CNSHA or HNSHA).

Target Details

Molecular Weight: 58 kDa (MW of target protein)

Pathways: [Ribonucleoside Biosynthetic Process](#)

Application Details

Application Notes: WB: 5 µg/mL, IHC: 4-8 µg/mL

Optimal conditions should be determined by the investigator.

Comment: PKLR Blocking Peptide, catalog no. 33R-8888, is also available for use as a blocking control in assays to test for specificity of this PKLR antibody

Restrictions: For Research Use only

Handling

Format: Lyophilized

Reconstitution: Lyophilized powder. Add distilled water for a 1 mg/mL concentration of PKLR antibody in PBS

Concentration: Lot specific

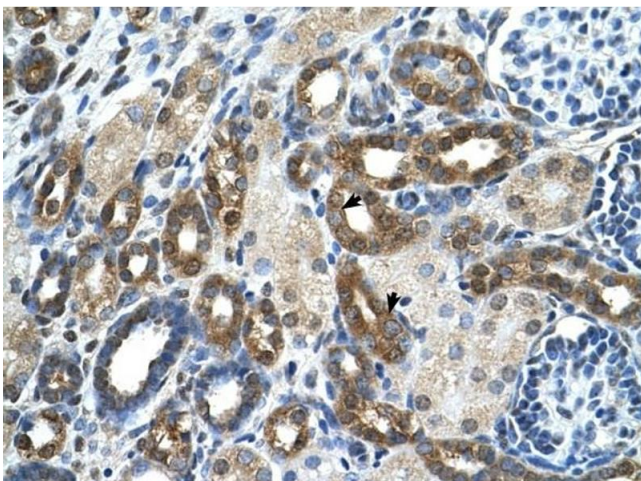
Buffer: PBS

Handling Advice: Avoid repeated freeze/thaw cycles.
Dilute only prior to immediate use.

Storage: 4 °C/-20 °C

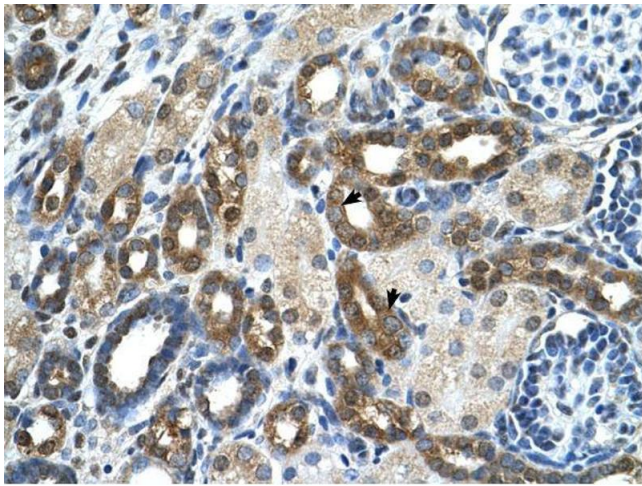
Storage Comment: Store at 2-8 °C for short periods. For longer periods of storage, store at -20 °C.

Images



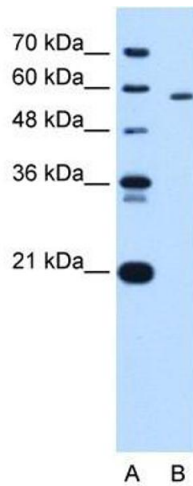
Immunohistochemistry

Image 1. PKLR antibody was used for immunohistochemistry at a concentration of 4-8 µg/ml to stain Epithelial cells of renal tubule (arrows) in Human Kidney. Magnification is at 400X



Immunohistochemistry

Image 2. PKLR antibody was used for immunohistochemistry at a concentration of 4-8 ug/ml. Magnification is at 400X



Western Blotting

Image 3. PKLR antibody used at 5 ug/ml to detect target protein.