

Datasheet for ABIN629807 **anti-HBZ antibody (N-Term)**

2 Images



[Go to Product page](#)

Overview

Quantity:	100 µg
Target:	HBZ
Binding Specificity:	N-Term
Reactivity:	Human
Host:	Rabbit
Clonality:	Polyclonal
Conjugate:	This HBZ antibody is un-conjugated
Application:	Western Blotting (WB), Immunohistochemistry (IHC)

Product Details

Immunogen:	Hemoglobin Zeta antibody was raised using the N terminal of HBZ corresponding to a region with amino acids ERLFLSHPQTKTYFPHFDLHPGSAQLRAHGSKVVAAVGDAVKSIDDIGGA
Specificity:	Hemoglobin Zeta antibody was raised against the N terminal of HBZ
Purification:	Purified

Target Details

Target:	HBZ
Alternative Name:	Hemoglobin zeta (HBZ Products)
Background:	Zeta-globin is an alpha-like hemoglobin. The zeta-globin polypeptide is synthesized in the yolk sac of the early embryo, while alpha-globin is produced throughout fetal and adult life. The zeta-globin gene is a member of the human alpha-globin gene cluster that includes five

Target Details

functional genes and two pseudogenes.

Molecular Weight: 16 kDa (MW of target protein)

Application Details

Application Notes: WB: 1.25 µg/mL, IHC: 4-8 µg/mL
Optimal conditions should be determined by the investigator.

Comment: Hemoglobin Zeta Blocking Peptide, catalog no. 33R-2702, is also available for use as a blocking control in assays to test for specificity of this Hemoglobin Zeta antibody

Restrictions: For Research Use only

Handling

Format: Lyophilized

Reconstitution: Lyophilized powder. Add distilled water for a 1 mg/mL concentration of HBZ antibody in PBS

Concentration: Lot specific

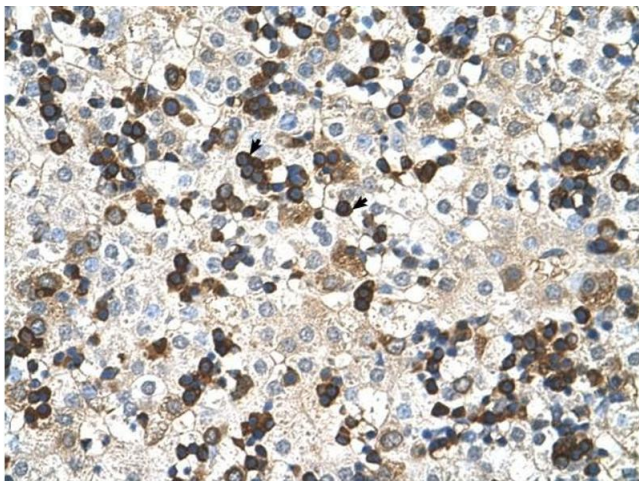
Buffer: PBS

Handling Advice: Avoid repeated freeze/thaw cycles.
Dilute only prior to immediate use.

Storage: 4 °C/-20 °C

Storage Comment: Store at 2-8 °C for short periods. For longer periods of storage, store at -20 °C.

Images



Immunohistochemistry

Image 1. Hemoglobin Zeta antibody was used for immunohistochemistry at a concentration of 4-8 µg/ml to stain Hemopoietic cells (arrows) in Human Liver. Magnification is at 400X



Western Blotting

Image 2. Hemoglobin Zeta antibody used at 1.25 ug/ml to detect target protein.