

Datasheet for ABIN629812
anti-GINS1 antibody



[Go to Product page](#)

1 Image

Overview

Quantity:	100 µg
Target:	GINS1
Reactivity:	Human, Mouse, Dog, Rat
Host:	Rabbit
Clonality:	Polyclonal
Conjugate:	This GINS1 antibody is un-conjugated
Application:	Western Blotting (WB)

Product Details

Immunogen:	GINS1 antibody was raised using a synthetic peptide corresponding to a region with amino acids MFCEKAMELIRELHRAPEGQLPAFNEDGLRQVLEEMKALYEQNQSDVNEA
Purification:	Purified

Target Details

Target:	GINS1
Alternative Name:	GINS1 (GINS1 Products)
Background:	The GINS complex plays an essential role in the initiation of DNA replication.
Molecular Weight:	23 kDa (MW of target protein)
Pathways:	DNA Replication , Synthesis of DNA

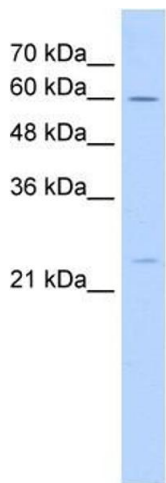
Application Details

Application Notes:	WB: 5 µg/mL Optimal conditions should be determined by the investigator.
Comment:	GINS1 Blocking Peptide, catalog no. 33R-5986, is also available for use as a blocking control in assays to test for specificity of this GINS1 antibody
Restrictions:	For Research Use only

Handling

Format:	Lyophilized
Reconstitution:	Lyophilized powder. Add distilled water for a 1 mg/mL concentration of GINS1 antibody in PBS
Concentration:	Lot specific
Buffer:	PBS
Handling Advice:	Avoid repeated freeze/thaw cycles.
Storage:	4 °C/-20 °C
Storage Comment:	Store at 2-8 °C for short periods. For longer periods of storage, store at -20 °C.

Images



Western Blotting

Image 1. GINS1 antibody used at 5 ug/ml to detect target protein.