

Datasheet for ABIN629813 **anti-PPCDC antibody (N-Term)**



[Go to Product page](#)

1 Image

Overview

Quantity:	100 µg
Target:	PPCDC
Binding Specificity:	N-Term
Reactivity:	Human, Dog
Host:	Rabbit
Clonality:	Polyclonal
Conjugate:	This PPCDC antibody is un-conjugated
Application:	Western Blotting (WB)

Product Details

Immunogen:	PPCDC antibody was raised using the N terminal of PPCDC corresponding to a region with amino acids VTTERAKHFYSPQDIPVTLYSDADEWEIWKSRSDPVLHIDLRRWADLLL
Specificity:	PPCDC antibody was raised against the N terminal of PPCDC
Purification:	Purified

Target Details

Target:	PPCDC
Alternative Name:	PPCDC (PPCDC Products)
Background:	Biosynthesis of coenzyme A (CoA) from pantothenic acid (vitamin B5) is an essential universal pathway in prokaryotes and eukaryotes. PPCDC, one of the last enzymes in this pathway, converts phosphopantothenoylcysteine to 4-prime-phosphopantetheine.

Target Details

Molecular Weight: 22 kDa (MW of target protein)

Pathways: [Ribonucleoside Biosynthetic Process](#)

Application Details

Application Notes: WB: 2.5 µg/mL
Optimal conditions should be determined by the investigator.

Comment: PPCDC Blocking Peptide, catalog no. 33R-9859, is also available for use as a blocking control in assays to test for specificity of this PPCDC antibody

Restrictions: For Research Use only

Handling

Format: Lyophilized

Reconstitution: Lyophilized powder. Add distilled water for a 1 mg/mL concentration of PPCDC antibody in PBS

Concentration: Lot specific

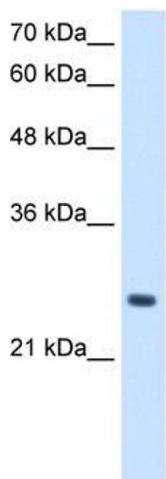
Buffer: PBS

Handling Advice: Avoid repeated freeze/thaw cycles.
Dilute only prior to immediate use.

Storage: 4 °C/-20 °C

Storage Comment: Store at 2-8 °C for short periods. For longer periods of storage, store at -20 °C.

Images



Western Blotting

Image 1. PPCDC antibody used at 2.5 µg/ml to detect target protein.