

Datasheet for ABIN629820
anti-FOYG1 antibody (N-Term)



[Go to Product page](#)

3 Images

Overview

| | |
|----------------------|---|
| Quantity: | 100 µg |
| Target: | FOYG1 |
| Binding Specificity: | N-Term |
| Reactivity: | Human |
| Host: | Rabbit |
| Clonality: | Polyclonal |
| Conjugate: | This FOYG1 antibody is un-conjugated |
| Application: | Western Blotting (WB), Immunohistochemistry (IHC) |

Product Details

| | |
|---------------|---|
| Immunogen: | FOYG1 A antibody was raised using the N terminal of FOYG1 corresponding to a region with amino acids GAPEGQRQLAQGDRRGRGICPVGPDEKEKARAGGEEKKGAGEGGKDGEGG |
| Specificity: | FOYG1 A antibody was raised against the N terminal of FOYG1 |
| Purification: | Purified |

Target Details

| | |
|-------------------|---|
| Target: | FOYG1 |
| Alternative Name: | FOYG1A (FOYG1 Products) |
| Background: | Forkhead-related protein FKHL2 (brain factor 2, FOYG1A, Forkhead box protein G1A, HFK2) is a member of the fork head gene family of transcription factors. |

Target Details

Molecular Weight: 51 kDa (MW of target protein)

Application Details

Application Notes: WB: 5-8 µg/mL, IHC: 4-8 µg/mL
Optimal conditions should be determined by the investigator.

Comment: FOXG1A Blocking Peptide, catalog no. 33R-3166, is also available for use as a blocking control in assays to test for specificity of this FOXG1A antibody

Restrictions: For Research Use only

Handling

Format: Lyophilized

Reconstitution: Lyophilized powder. Add distilled water for a 1 mg/mL concentration of FOXG0 antibody in PBS

Concentration: Lot specific

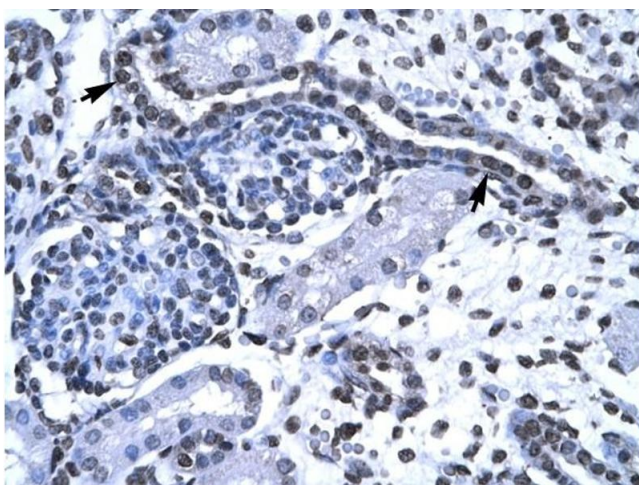
Buffer: PBS

Handling Advice: Avoid repeated freeze/thaw cycles.
Dilute only prior to immediate use.

Storage: 4 °C/-20 °C

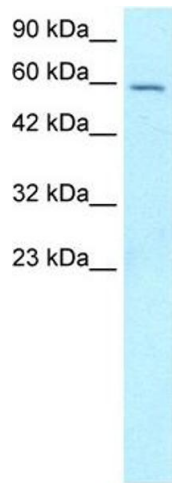
Storage Comment: Store at 2-8 °C for short periods. For longer periods of storage, store at -20 °C.

Images



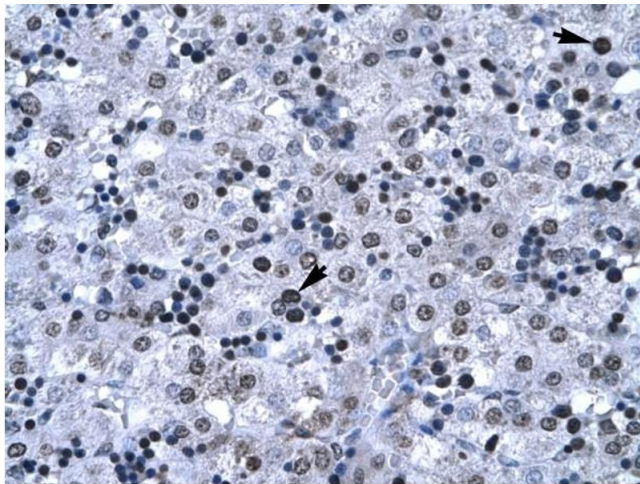
Immunohistochemistry

Image 1. FOXG1A antibody was used for immunohistochemistry at a concentration of 4-8 ug/ml to stain Epithelial cells of renal tubule (arrows) in Human Kidney. Magnification is at 400X.



Western Blotting

Image 2. FOXG1A antibody used at 5-8 ug/ml to detect target protein.



Immunohistochemistry

Image 3. FOXG1A antibody was used for immunohistochemistry at a concentration of 4-8 ug/ml to stain Hepatocyte (arrows) in Human Liver. Magnification is at 400X