

Datasheet for ABIN629821 **anti-PFKL antibody (Middle Region)**



[Go to Product page](#)

1 Image

Overview

Quantity:	100 µg
Target:	PFKL
Binding Specificity:	Middle Region
Reactivity:	Human, Mouse, Rat, Dog
Host:	Rabbit
Clonality:	Polyclonal
Conjugate:	This PFKL antibody is un-conjugated
Application:	Western Blotting (WB)

Product Details

Immunogen:	PFKL antibody was raised using the middle region of PFKL corresponding to a region with amino acids RTNVLGHLQGGAPTPFDRNYGTKLGVKAMLWLSEKLREYVRKGRVFANA
Specificity:	PFKL antibody was raised against the middle region of PFKL
Purification:	Purified

Target Details

Target:	PFKL
Alternative Name:	PFKL (PFKL Products)
Background:	Phosphofructokinase (PFK) is a tetrameric enzyme that catalyzes a key step in glycolysis, namely the conversion of D-fructose 6-phosphate to D-fructose 1,6-bisphosphate. PFK from muscle is a homotetramer of M subunit, PFK from liver is a homotetramer of L-subunits, while

Target Details

PFKL from platelets can be composed of any tetrameric combination of M and L subunits. PFKL represents the L subunit.

Molecular Weight: 64 kDa (MW of target protein)

Pathways: [Negative Regulation of Hormone Secretion, Warburg Effect](#)

Application Details

Application Notes: WB: 2.5 µg/mL
Optimal conditions should be determined by the investigator.

Comment: PFKL Blocking Peptide, catalog no. 33R-8233, is also available for use as a blocking control in assays to test for specificity of this PFKL antibody

Restrictions: For Research Use only

Handling

Format: Lyophilized

Reconstitution: Lyophilized powder. Add distilled water for a 1 mg/mL concentration of PFKL antibody in PBS

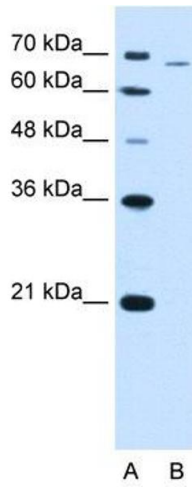
Concentration: Lot specific

Buffer: PBS

Handling Advice: Avoid repeated freeze/thaw cycles.
Dilute only prior to immediate use.

Storage: 4 °C/-20 °C

Storage Comment: Store at 2-8 °C for short periods. For longer periods of storage, store at -20 °C.



Western Blotting

Image 1. PFKL antibody used at 2.5 ug/ml to detect target protein.