

Datasheet for ABIN629829
anti-MAP3K7CL antibody (C-Term)



[Go to Product page](#)

2 Images

Overview

Quantity:	100 µg
Target:	MAP3K7CL
Binding Specificity:	C-Term
Reactivity:	Human, Rat, Mouse
Host:	Rabbit
Clonality:	Polyclonal
Conjugate:	This MAP3K7CL antibody is un-conjugated
Application:	Western Blotting (WB), Immunohistochemistry (IHC)

Product Details

Immunogen:	C21 ORF7 antibody was raised using the C terminal Of C21 rf7 corresponding to a region with amino acids DSEESMEVFKQHCQIAEEYHEVKKEITLLEQRKKELIAKLDQAEKEKVDA
Specificity:	C21 ORF7 antibody was raised against the C terminal Of C21 rf7
Purification:	Purified

Target Details

Target:	MAP3K7CL
Alternative Name:	C21ORF7 (MAP3K7CL Products)
Background:	C21orf7 plays a critical role in the TGF-beta signaling transduction pathway.
Molecular Weight:	27 kDa (MW of target protein)

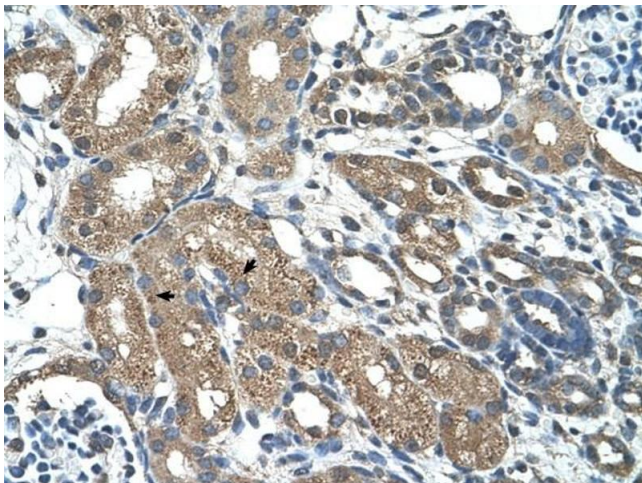
Application Details

Application Notes:	WB: 1.25 µg/mL, IHC: 4-8 µg/mL Optimal conditions should be determined by the investigator.
Comment:	C21ORF7 Blocking Peptide, catalog no. 33R-2161, is also available for use as a blocking control in assays to test for specificity of this C21ORF7 antibody
Restrictions:	For Research Use only

Handling

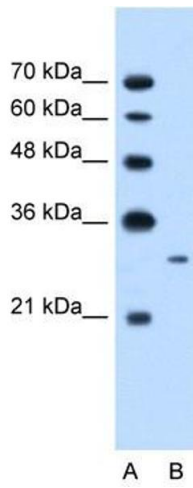
Format:	Lyophilized
Reconstitution:	Lyophilized powder. Add distilled water for a 1 mg/mL concentration of C20 RF7 antibody in PBS
Concentration:	Lot specific
Buffer:	PBS
Handling Advice:	Avoid repeated freeze/thaw cycles. Dilute only prior to immediate use.
Storage:	4 °C/-20 °C
Storage Comment:	Store at 2-8 °C for short periods. For longer periods of storage, store at -20 °C.

Images



Immunohistochemistry

Image 1. C21ORF7 antibody was used for immunohistochemistry at a concentration of 4-8 ug/ml to stain Epithelial cells of renal tubule (arrows) in Human Kidney. Magnification is at 400X



Western Blotting

Image 2. C21ORF7 antibody used at 1.25 ug/ml to detect target protein.