

Datasheet for ABIN629832
anti-EPS8-Like 1 antibody (N-Term)



[Go to Product page](#)

2 Images

Overview

Quantity:	100 µg
Target:	EPS8-Like 1 (EPS8L1)
Binding Specificity:	N-Term
Reactivity:	Human
Host:	Rabbit
Clonality:	Polyclonal
Conjugate:	This EPS8-Like 1 antibody is un-conjugated
Application:	Western Blotting (WB), Immunohistochemistry (IHC)

Product Details

Immunogen:	EPS8 L1 antibody was raised using the N terminal of EPS8 1 corresponding to a region with amino acids QRDRSPAETPPLQRRPSVRAVISTVERGAGRGRPQAKPIPEAEEAQRPE
Specificity:	EPS8 L1 antibody was raised against the N terminal of EPS8 1
Purification:	Purified

Target Details

Target:	EPS8-Like 1 (EPS8L1)
Alternative Name:	EPS8L1 (EPS8L1 Products)
Background:	EPS8L1 a protein that is related to epidermal growth factor receptor pathway substrate 8 (EPS8), a substrate for the epidermal growth factor receptor. The function of this protein is unknown.

Target Details

Molecular Weight: 66 kDa (MW of target protein)

Application Details

Application Notes: WB: 1.25 µg/mL, IHC: 4-8 µg/mL
Optimal conditions should be determined by the investigator.

Comment: EPS8L1 Blocking Peptide, catalog no. 33R-7707, is also available for use as a blocking control in assays to test for specificity of this EPS8L1 antibody

Restrictions: For Research Use only

Handling

Format: Lyophilized

Reconstitution: Lyophilized powder. Add distilled water for a 1 mg/mL concentration of EPS0 1 antibody in PBS

Concentration: Lot specific

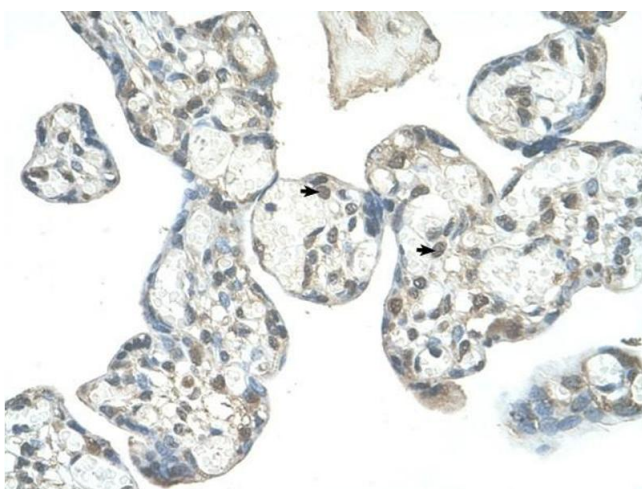
Buffer: PBS

Handling Advice: Avoid repeated freeze/thaw cycles.
Dilute only prior to immediate use.

Storage: 4 °C/-20 °C

Storage Comment: Store at 2-8 °C for short periods. For longer periods of storage, store at -20 °C.

Images



Immunohistochemistry

Image 1. EPS8L1 antibody was used for immunohistochemistry at a concentration of 4-8 ug/ml to stain Decidual cells (arrows) in Human Placenta. Magnification is at 400X



Western Blotting

Image 2. EPS8L1 antibody used at 1.25 ug/ml to detect target protein.