

Datasheet for ABIN629833 **anti-RGS16 antibody (C-Term)**



[Go to Product page](#)

1 Image

Overview

Quantity:	100 µg
Target:	RGS16
Binding Specificity:	C-Term
Reactivity:	Human, Mouse, Rat, Dog
Host:	Rabbit
Clonality:	Polyclonal
Conjugate:	This RGS16 antibody is un-conjugated
Application:	Western Blotting (WB)

Product Details

Immunogen:	RGS16 antibody was raised using the C terminal of RGS16 corresponding to a region with amino acids DAAQGKTRTLMKDSYPRFLKSPAYRDLAAQASAASATLSSCSLDEPSHT
Specificity:	RGS16 antibody was raised against the C terminal of RGS16
Purification:	Purified

Target Details

Target:	RGS16
Alternative Name:	RGS16 (RGS16 Products)
Background:	RGS16 belongs to the 'regulator of G protein signaling' family. It inhibits signal transduction by increasing the GTPase activity of G protein alpha subunits. It also may play a role in regulating the kinetics of signaling in the phototransduction cascade.

Target Details

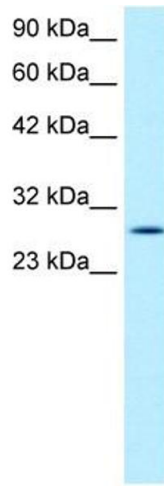
Molecular Weight:	23 kDa (MW of target protein)
Pathways:	Myometrial Relaxation and Contraction, Regulation of G-Protein Coupled Receptor Protein Signaling

Application Details

Application Notes:	WB: 1 µg/mL Optimal conditions should be determined by the investigator.
Comment:	RGS16 Blocking Peptide, catalog no. 33R-1842, is also available for use as a blocking control in assays to test for specificity of this RGS16 antibody
Restrictions:	For Research Use only

Handling

Format:	Lyophilized
Reconstitution:	Lyophilized powder. Add distilled water for a 1 mg/mL concentration of RGS16 antibody in PBS
Concentration:	Lot specific
Buffer:	PBS
Handling Advice:	Avoid repeated freeze/thaw cycles. Dilute only prior to immediate use.
Storage:	4 °C/-20 °C
Storage Comment:	Store at 2-8 °C for short periods. For longer periods of storage, store at -20 °C.



Western Blotting

Image 1. RGS16 antibody used at 1 ug/ml to detect target protein.