

Datasheet for ABIN629838 **anti-NUDT16L1 antibody**



[Go to Product page](#)

1 Image

Overview

Quantity:	100 µg
Target:	NUDT16L1
Reactivity:	Human, Mouse, Rat
Host:	Rabbit
Clonality:	Polyclonal
Conjugate:	This NUDT16L1 antibody is un-conjugated
Application:	Western Blotting (WB)

Product Details

Immunogen:	NUDT16 L1 antibody was raised using a synthetic peptide corresponding to a region with amino acids GLVRVPLYTQKDRVGGFPNFLSNAFVSTAKCQLLFALKVLNMMPEEKLVE
Purification:	Purified

Target Details

Target:	NUDT16L1
Alternative Name:	NUDT16L1 (NUDT16L1 Products)
Background:	NUDT16L1 is a probable adapter protein, which may link syndecan-4 (SDC4) and paxilin (TGFB11 and PXN) receptors.
Molecular Weight:	23 kDa (MW of target protein)

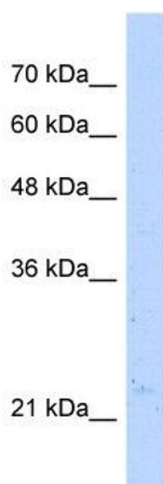
Application Details

Application Notes:	WB: 0.2-1 µg/mL Optimal conditions should be determined by the investigator.
Comment:	NUDT16L1 Blocking Peptide, catalog no. 33R-3430, is also available for use as a blocking control in assays to test for specificity of this NUDT16L1 antibody
Restrictions:	For Research Use only

Handling

Format:	Lyophilized
Reconstitution:	Lyophilized powder. Add distilled water for a 1 mg/mL concentration of NUDT10 1 antibody in PBS
Concentration:	Lot specific
Buffer:	PBS
Handling Advice:	Avoid repeated freeze/thaw cycles.
Storage:	4 °C/-20 °C
Storage Comment:	Store at 2-8 °C for short periods. For longer periods of storage, store at -20 °C.

Images



Western Blotting

Image 1. Western Blot showing NUDT16L1 antibody used at a concentration of 1-2 µg/ml to detect its target protein.