

Datasheet for ABIN629841 **anti-GTPBP2 antibody (C-Term)**



[Go to Product page](#)

1 Image

Overview

Quantity:	100 µg
Target:	GTPBP2
Binding Specificity:	C-Term
Reactivity:	Human, Mouse, Rat, Dog
Host:	Rabbit
Clonality:	Polyclonal
Conjugate:	This GTPBP2 antibody is un-conjugated
Application:	Western Blotting (WB)

Product Details

Immunogen:	GTPBP2 antibody was raised using the C terminal of GTPBP2 corresponding to a region with amino acids VLLFHATTFRRGFQVTVHVGNVQRQTAVVEKIHAKDKLRTGEKAVVRFRL
Specificity:	GTPBP2 antibody was raised against the C terminal of GTPBP2
Purification:	Purified

Target Details

Target:	GTPBP2
Alternative Name:	GTPBP2 (GTPBP2 Products)
Background:	GTP-binding proteins, or G proteins, constitute a superfamily capable of binding GTP or GDP. G proteins are activated by binding GTP and are inactivated by hydrolyzing GTP to GDP. This general mechanism enables G proteins to perform a wide range of biologic activities.

Target Details

Molecular Weight: 48 kDa (MW of target protein)

Application Details

Application Notes: WB: 1.25 µg/mL
Optimal conditions should be determined by the investigator.

Comment: GTPBP2 Blocking Peptide, catalog no. 33R-9672, is also available for use as a blocking control in assays to test for specificity of this GTPBP2 antibody

Restrictions: For Research Use only

Handling

Format: Lyophilized

Reconstitution: Lyophilized powder. Add distilled water for a 1 mg/mL concentration of GTPBP2 antibody in PBS

Concentration: Lot specific

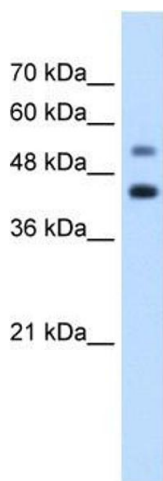
Buffer: PBS

Handling Advice: Avoid repeated freeze/thaw cycles.
Dilute only prior to immediate use.

Storage: 4 °C/-20 °C

Storage Comment: Store at 2-8 °C for short periods. For longer periods of storage, store at -20 °C.

Images



Western Blotting

Image 1. GTPBP2 antibody used at 1.25 ug/ml to detect target protein.