

Datasheet for ABIN629843  
**anti-PRPS2 antibody (Middle Region)**



[Go to Product page](#)

1 Image

## Overview

Quantity:	100 µg
Target:	PRPS2
Binding Specificity:	Middle Region
Reactivity:	Human, Rat, Mouse, Dog, Drosophila melanogaster
Host:	Rabbit
Clonality:	Polyclonal
Conjugate:	This PRPS2 antibody is un-conjugated
Application:	Western Blotting (WB)

## Product Details

Immunogen:	PRPS2 antibody was raised using the middle region of PRPS2 corresponding to a region with amino acids ENIAEWKNCIIVSPDAGGAKRVTSIADRLNVEFALIHKERRKKANEVDRMV
Specificity:	PRPS2 antibody was raised against the middle region of PRPS2
Purification:	Purified

## Target Details

Target:	PRPS2
Alternative Name:	PRPS2 ( <a href="#">PRPS2 Products</a> )
Background:	PRPS2 is a phosphoribosyl pyrophosphate synthetase that plays a central role in the synthesis of purines and pyrimidines. The PRPS2 protein catalyzes the synthesis of 5-phosphoribosyl 1-pyrophosphate from ATP and D-ribose 5-phosphate.

## Target Details

Molecular Weight:	35 kDa (MW of target protein)
Pathways:	<a href="#">Ribonucleoside Biosynthetic Process</a>

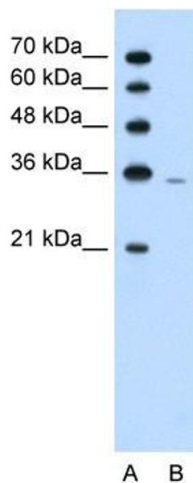
## Application Details

Application Notes:	WB: 1.25 µg/mL Optimal conditions should be determined by the investigator.
Comment:	PRPS2 Blocking Peptide, catalog no. 33R-2608, is also available for use as a blocking control in assays to test for specificity of this PRPS2 antibody
Restrictions:	For Research Use only

## Handling

Format:	Lyophilized
Reconstitution:	Lyophilized powder. Add distilled water for a 1 mg/mL concentration of PRPS2 antibody in PBS
Concentration:	Lot specific
Buffer:	PBS
Handling Advice:	Avoid repeated freeze/thaw cycles. Dilute only prior to immediate use.
Storage:	4 °C/-20 °C
Storage Comment:	Store at 2-8 °C for short periods. For longer periods of storage, store at -20 °C.

## Images



### Western Blotting

**Image 1.** PRPS2 antibody used at 1.25 µg/ml to detect target protein.