

Datasheet for ABIN629848
anti-MTMR1 antibody (C-Term)



[Go to Product page](#)

1 Image

Overview

Quantity:	100 µg
Target:	MTMR1
Binding Specificity:	C-Term
Reactivity:	Human, Mouse
Host:	Rabbit
Clonality:	Polyclonal
Conjugate:	This MTMR1 antibody is un-conjugated
Application:	Western Blotting (WB)

Product Details

Immunogen:	MTMR1 antibody was raised using the C terminal of MTMR1 corresponding to a region with amino acids KEDVYTKTISLWSYINSQLDEFSNPFVNYENHVLYPVASLSHLELWVNY
Specificity:	MTMR1 antibody was raised against the C terminal of MTMR1
Purification:	Purified

Target Details

Target:	MTMR1
Alternative Name:	MTMR1 (MTMR1 Products)
Background:	MTMR1 is a member of the myotubularin related family of proteins. Members of this family contain the consensus sequence for the active site of protein tyrosine phosphatases.

Target Details

Molecular Weight: 73 kDa (MW of target protein)

Pathways: [Inositol Metabolic Process](#)

Application Details

Application Notes: WB: 1.25 µg/mL
Optimal conditions should be determined by the investigator.

Comment: MTMR1 Blocking Peptide, catalog no. 33R-4322, is also available for use as a blocking control in assays to test for specificity of this MTMR1 antibody

Restrictions: For Research Use only

Handling

Format: Lyophilized

Reconstitution: Lyophilized powder. Add distilled water for a 1 mg/mL concentration of MTMR1 antibody in PBS

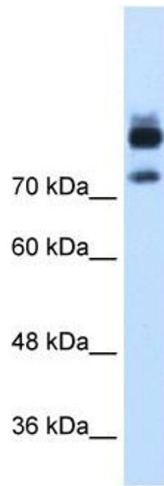
Concentration: Lot specific

Buffer: PBS

Handling Advice: Avoid repeated freeze/thaw cycles.
Dilute only prior to immediate use.

Storage: 4 °C/-20 °C

Storage Comment: Store at 2-8 °C for short periods. For longer periods of storage, store at -20 °C.



Western Blotting

Image 1. MTMR1 antibody used at 1.25 ug/ml to detect target protein.