

## Datasheet for ABIN629851 **anti-AKR1B10 antibody**



[Go to Product page](#)

### 1 Image

#### Overview

Quantity:	100 µg
Target:	AKR1B10
Reactivity:	Human, Mouse
Host:	Rabbit
Clonality:	Polyclonal
Conjugate:	This AKR1B10 antibody is un-conjugated
Application:	Western Blotting (WB)

#### Product Details

Immunogen:	AKR1 B10 antibody was raised using a synthetic peptide corresponding to a region with amino acids NEHEVGEGAIQEKIQEKA VKREDLFIVSKLWPTFFERPLVRKAFEKTLKDL
Purification:	Purified

#### Target Details

Target:	AKR1B10
Alternative Name:	AKR1B10 ( <a href="#">AKR1B10 Products</a> )
Background:	AKR1B10 is a member of the aldo/keto reductase superfamily, which consists of more than 40 known enzymes and proteins. This member can efficiently reduce aliphatic and aromatic aldehydes, and it is less active on hexoses. It is highly expressed in adrenal gland, small intestine, and colon, and may play an important role in liver carcinogenesis.
Molecular Weight:	35 kDa (MW of target protein)

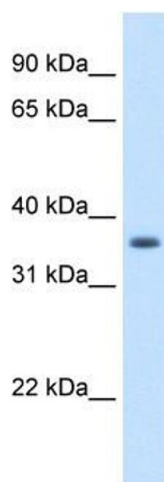
## Application Details

Application Notes:	WB: 1.25 µg/mL Optimal conditions should be determined by the investigator.
Comment:	AKR1B10 Blocking Peptide, catalog no. 33R-6669, is also available for use as a blocking control in assays to test for specificity of this AKR1B10 antibody
Restrictions:	For Research Use only

## Handling

Format:	Lyophilized
Reconstitution:	Lyophilized powder. Add distilled water for a 1 mg/mL concentration of AKR10 antibody in PBS
Concentration:	Lot specific
Buffer:	PBS
Handling Advice:	Avoid repeated freeze/thaw cycles.
Storage:	4 °C/-20 °C
Storage Comment:	Store at 2-8 °C for short periods. For longer periods of storage, store at -20 °C.

## Images



### Western Blotting

**Image 1.** AKR1B10 antibody used at 1.25 µg/ml to detect target protein.