

Datasheet for ABIN629852
anti-PSG3 antibody (N-Term)



[Go to Product page](#)

2 Images

Overview

Quantity:	100 µg
Target:	PSG3
Binding Specificity:	N-Term
Reactivity:	Human
Host:	Rabbit
Clonality:	Polyclonal
Conjugate:	This PSG3 antibody is un-conjugated
Application:	Western Blotting (WB), Immunohistochemistry (IHC)

Product Details

Immunogen:	PSG3 antibody was raised using the N terminal of PSG3 corresponding to a region with amino acids VYSNASLLIQNVTREDAGSYTLHIVKRGDGRGETGHFTFTLYLETPKPS
Specificity:	PSG3 antibody was raised against the N terminal of PSG3
Purification:	Purified

Target Details

Target:	PSG3
Alternative Name:	PSG3 (PSG3 Products)
Background:	The human pregnancy-specific glycoproteins (PSGs) are a family of proteins that are synthesized in large amounts by placental trophoblasts and released into the maternal circulation during pregnancy. Molecular cloning and analysis of several PSG genes has

Target Details

indicated that the PSGs form a subgroup of the carcinoembryonic antigen (CEA) gene family, which belongs to the immunoglobulin superfamily of genes.

Molecular Weight: 16 kDa (MW of target protein)

Application Details

Application Notes: WB: 5 µg/mL, IHC: 4-8 µg/mL
Optimal conditions should be determined by the investigator.

Comment: PSG3 Blocking Peptide, catalog no. 33R-9927, is also available for use as a blocking control in assays to test for specificity of this PSG3 antibody

Restrictions: For Research Use only

Handling

Format: Lyophilized

Reconstitution: Lyophilized powder. Add distilled water for a 1 mg/mL concentration of PSG3 antibody in PBS

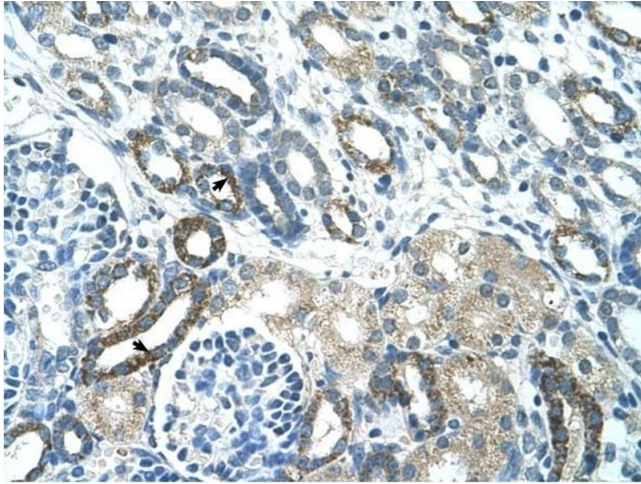
Concentration: Lot specific

Buffer: PBS

Handling Advice: Avoid repeated freeze/thaw cycles.
Dilute only prior to immediate use.

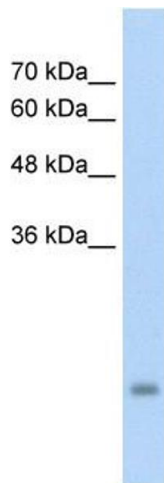
Storage: 4 °C/-20 °C

Storage Comment: Store at 2-8 °C for short periods. For longer periods of storage, store at -20 °C.



Immunohistochemistry

Image 1. PSG3 antibody was used for immunohistochemistry at a concentration of 4-8 ug/ml to stain Epithelial cells of renal tubule (arrows) in Human Kidney. Magnification is at 400X



Western Blotting

Image 2. PSG3 antibody used at 5 ug/ml to detect target protein.