

Datasheet for ABIN629857  
**anti-MORF4L1 antibody (Middle Region)**



[Go to Product page](#)

3 Images

## Overview

Quantity:	100 µg
Target:	MORF4L1
Binding Specificity:	Middle Region
Reactivity:	Human, Mouse, Rat, Dog, Zebrafish (Danio rerio)
Host:	Rabbit
Clonality:	Polyclonal
Conjugate:	This MORF4L1 antibody is un-conjugated
Application:	Western Blotting (WB), Immunohistochemistry (IHC)

## Product Details

Immunogen:	MORF4 L1 antibody was raised using the middle region of MORF4 1 corresponding to a region with amino acids YAVNEVVAGIKEYFNVMLGTQLLYKFERPQYAEILADHPDAPMSQ
Specificity:	MORF4 L1 antibody was raised against the middle region of MORF4 1
Purification:	Purified

## Target Details

Target:	MORF4L1
Alternative Name:	MORF4L1 ( <a href="#">MORF4L1 Products</a> )
Background:	MORF4L1 is a novel chromodomain protein that is present in two distinct multiprotein complexes involved in transcriptional activation.

## Target Details

---

Molecular Weight: 40 kDa (MW of target protein)

Pathways: [Chromatin Binding](#)

## Application Details

---

Application Notes: WB: 5-10 µg/mL, IHC: 4-8 µg/mL  
Optimal conditions should be determined by the investigator.

Comment: MORF4L1 Blocking Peptide, catalog no. 33R-10055, is also available for use as a blocking control in assays to test for specificity of this MORF4L1 antibody

Restrictions: For Research Use only

## Handling

---

Format: Lyophilized

Reconstitution: Lyophilized powder. Add distilled water for a 1 mg/mL concentration of MORF0 1 antibody in PBS

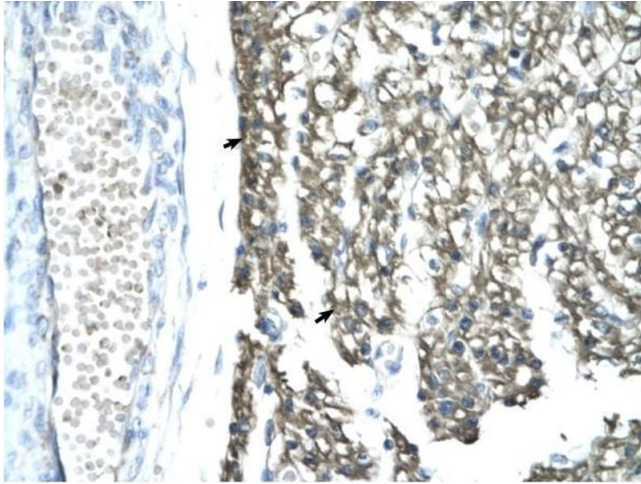
Concentration: Lot specific

Buffer: PBS

Handling Advice: Avoid repeated freeze/thaw cycles.  
Dilute only prior to immediate use.

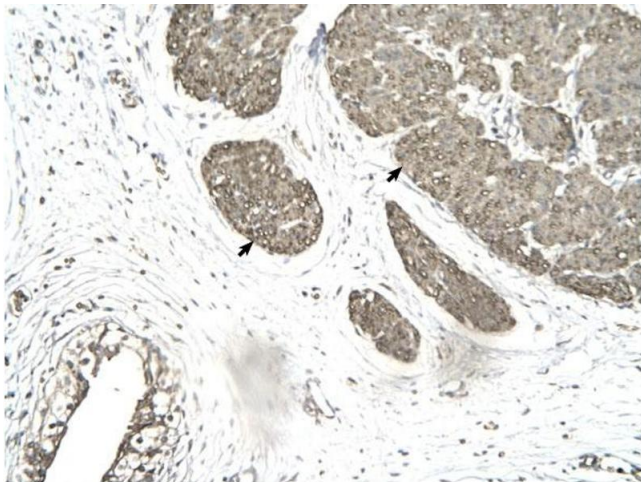
Storage: 4 °C/-20 °C

Storage Comment: Store at 2-8 °C for short periods. For longer periods of storage, store at -20 °C.



#### Immunohistochemistry

**Image 1.** MORF4L1 antibody was used for immunohistochemistry at a concentration of 4-8 ug/ml to stain Myocardial cells (arrows) in Human Heart. Magnification is at 400X



#### Immunohistochemistry

**Image 2.** MORF4L1 antibody was used for immunohistochemistry at a concentration of 4-8 ug/ml to stain Smooth muscle cells (arrows) in Human urinary bladder. Magnification is at 400X.



#### Western Blotting

**Image 3.** MORF4L1 antibody used at 5-10 ug/ml to detect target protein.