

Datasheet for ABIN629860  
**anti-SHMT2 antibody**

3 Images



[Go to Product page](#)

## Overview

Quantity:	100 µg
Target:	SHMT2
Reactivity:	Human, Mouse, Rat, Dog
Host:	Rabbit
Clonality:	Polyclonal
Conjugate:	This SHMT2 antibody is un-conjugated
Application:	Western Blotting (WB), Immunohistochemistry (IHC)

## Product Details

Immunogen:	SHMT2 antibody was raised using a synthetic peptide corresponding to a region with amino acids ELIASENFCSRAALEALGSCLNNKYSEGYPGKRYYGGAENVDEIELLCQR
Purification:	Purified

## Target Details

Target:	SHMT2
Alternative Name:	SHMT2 ( <a href="#">SHMT2 Products</a> )
Background:	SHMT2 plays a role in interconversion of serine and glycine.
Molecular Weight:	56 kDa (MW of target protein)

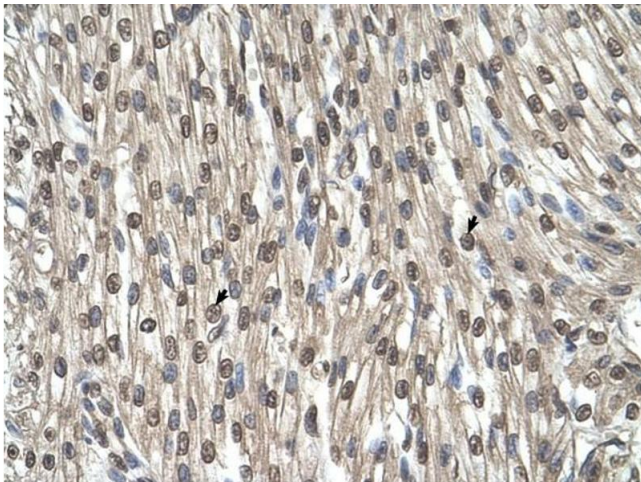
## Application Details

Application Notes:	WB: 2.5 µg/mL, IHC: 4-8 µg/mL Optimal conditions should be determined by the investigator.
Comment:	SHMT2 Blocking Peptide, catalog no. 33R-2550, is also available for use as a blocking control in assays to test for specificity of this SHMT2 antibody
Restrictions:	For Research Use only

## Handling

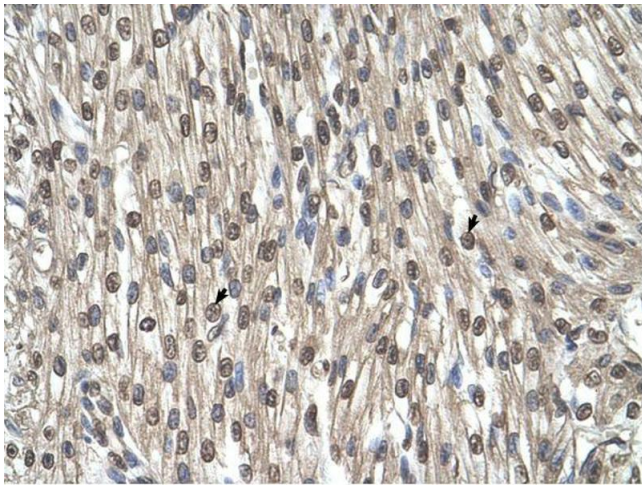
Format:	Lyophilized
Reconstitution:	Lyophilized powder. Add distilled water for a 1 mg/mL concentration of SHMT2 antibody in PBS
Concentration:	Lot specific
Buffer:	PBS
Handling Advice:	Avoid repeated freeze/thaw cycles.
Storage:	4 °C/-20 °C
Storage Comment:	Store at 2-8 °C for short periods. For longer periods of storage, store at -20 °C.

## Images



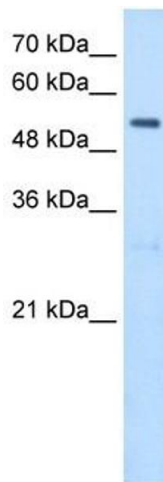
### Immunohistochemistry

**Image 1.** SHMT2 antibody was used for immunohistochemistry at a concentration of 4-8 ug/ml to stain Myocardial cells (arrows) in Human Heart. Magnification is at 400X



### Immunohistochemistry

**Image 2.** SHMT2 antibody was used for immunohistochemistry at a concentration of 4-8 ug/ml. Magnification is at 400X



### Western Blotting

**Image 3.** SHMT2 antibody used at 2.5 ug/ml to detect target protein.