

Datasheet for ABIN629862
anti-STIP1 antibody

2 Images



[Go to Product page](#)

Overview

Quantity:	100 µg
Target:	STIP1
Reactivity:	Human, Mouse, Rat, Dog
Host:	Rabbit
Clonality:	Polyclonal
Conjugate:	This STIP1 antibody is un-conjugated
Application:	Western Blotting (WB), Immunohistochemistry (IHC)

Product Details

Immunogen:	STIP1 antibody was raised using a synthetic peptide corresponding to a region with amino acids YQKALDLDSSCKEAADGYQRCMMAQYNRHDSPEDVKRRAMADPEVQQIMS
Purification:	Purified

Target Details

Target:	STIP1
Alternative Name:	STIP1 (STIP1 Products)
Background:	STIP1 mediates the association of the molecular chaperones HSC70 and HSP90 (HSPCA and HSPCB).
Molecular Weight:	63 kDa (MW of target protein)

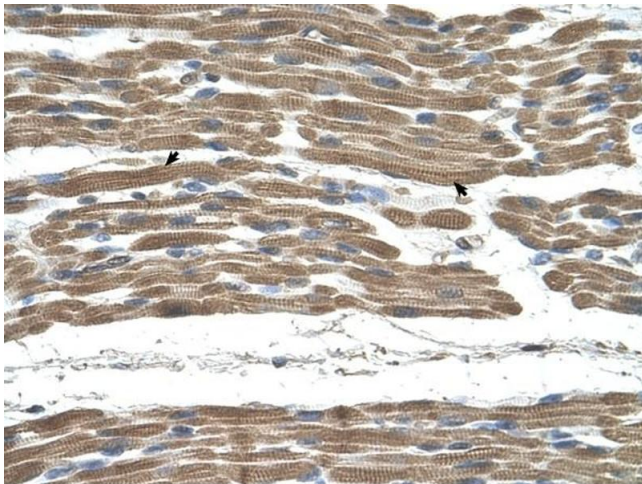
Application Details

Application Notes:	WB: 1.25 µg/mL, IHC: 4-8 µg/mL Optimal conditions should be determined by the investigator.
Comment:	STIP1 Blocking Peptide, catalog no. 33R-10212, is also available for use as a blocking control in assays to test for specificity of this STIP1 antibody
Restrictions:	For Research Use only

Handling

Format:	Lyophilized
Reconstitution:	Lyophilized powder. Add distilled water for a 1 mg/mL concentration of STIP1 antibody in PBS
Concentration:	Lot specific
Buffer:	PBS
Handling Advice:	Avoid repeated freeze/thaw cycles.
Storage:	4 °C/-20 °C
Storage Comment:	Store at 2-8 °C for short periods. For longer periods of storage, store at -20 °C.

Images



Immunohistochemistry

Image 1. STIP1 antibody was used for immunohistochemistry at a concentration of 4-8 ug/ml to stain Skeletal muscle cells (arrows) in Human Muscle. Magnification is at 400X



Western Blotting

Image 2. STIP1 antibody used at 1.25 ug/ml to detect target protein.