

Datasheet for ABIN629863  
**anti-IFI44L antibody (N-Term)**



[Go to Product page](#)

3 Images

## Overview

Quantity:	100 µg
Target:	IFI44L
Binding Specificity:	N-Term
Reactivity:	Human
Host:	Rabbit
Clonality:	Polyclonal
Conjugate:	This IFI44L antibody is un-conjugated
Application:	Western Blotting (WB), Immunohistochemistry (IHC)

## Product Details

Immunogen:	IFI44 L antibody was raised using the N terminal of IFI44 corresponding to a region with amino acids MEVTTRLTWNDENHLRKLKLLGNVLSLLYKSSVHGGSIEDMVERCSRQGCT
Specificity:	IFI44 L antibody was raised against the N terminal of IFI44
Purification:	Purified

## Target Details

Target:	IFI44L
Alternative Name:	IFI44L ( <a href="#">IFI44L Products</a> )
Background:	The function of this gene remains unknown.
Molecular Weight:	47 kDa (MW of target protein)

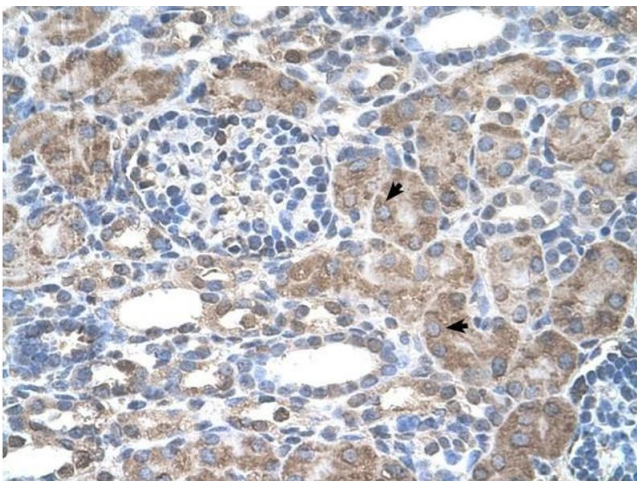
## Application Details

Application Notes:	WB: 5 µg/mL, IHC: 4-8 µg/mL Optimal conditions should be determined by the investigator.
Comment:	IFI44L Blocking Peptide, catalog no. 33R-5983, is also available for use as a blocking control in assays to test for specificity of this IFI44L antibody
Restrictions:	For Research Use only

## Handling

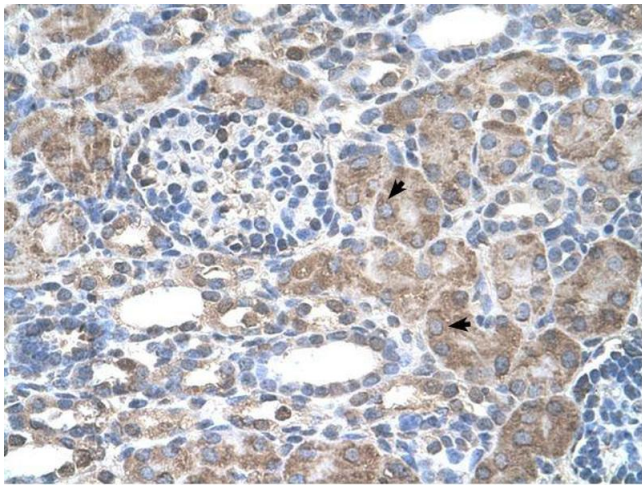
Format:	Lyophilized
Reconstitution:	Lyophilized powder. Add distilled water for a 1 mg/mL concentration of IFI40 antibody in PBS
Concentration:	Lot specific
Buffer:	PBS
Handling Advice:	Avoid repeated freeze/thaw cycles. Dilute only prior to immediate use.
Storage:	4 °C/-20 °C
Storage Comment:	Store at 2-8 °C for short periods. For longer periods of storage, store at -20 °C.

## Images



### Immunohistochemistry

**Image 1.** IFI44L antibody was used for immunohistochemistry at a concentration of 4-8 µg/ml to stain Epithelial cells of renal tubule (arrows) in Human Kidney. Magnification is at 400X



### Immunohistochemistry

**Image 2.** IFI44L antibody was used for immunohistochemistry at a concentration of 4-8 ug/ml. Magnification is at 400X



### Western Blotting

**Image 3.** IFI44L antibody used at 5 ug/ml to detect target protein.