

Datasheet for ABIN629864  
**anti-LZTFL1 antibody (C-Term)**



[Go to Product page](#)

1 Image

## Overview

Quantity:	100 µg
Target:	LZTFL1
Binding Specificity:	C-Term
Reactivity:	Human, Mouse, Rat
Host:	Rabbit
Clonality:	Polyclonal
Conjugate:	This LZTFL1 antibody is un-conjugated
Application:	Western Blotting (WB)

## Product Details

Immunogen:	LZTFL1 antibody was raised using the C terminal of LZTFL1 corresponding to a region with amino acids VQEQLHMAEKELEKKFQQTAAYRNMKEILTKKNDQIKDLRKRLAQYEPED
Specificity:	LZTFL1 antibody was raised against the C terminal of LZTFL1
Purification:	Purified

## Target Details

Target:	LZTFL1
Alternative Name:	LZTFL1 ( <a href="#">LZTFL1 Products</a> )
Background:	LZTFL1 may be involved in vesicle-mediated transport.
Molecular Weight:	34 kDa (MW of target protein)

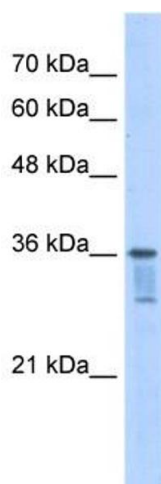
## Application Details

Application Notes:	WB: 2.5 µg/mL Optimal conditions should be determined by the investigator.
Comment:	LZTFL1 Blocking Peptide, catalog no. 33R-9745, is also available for use as a blocking control in assays to test for specificity of this LZTFL1 antibody
Restrictions:	For Research Use only

## Handling

Format:	Lyophilized
Reconstitution:	Lyophilized powder. Add distilled water for a 1 mg/mL concentration of LZTFL1 antibody in PBS
Concentration:	Lot specific
Buffer:	PBS
Handling Advice:	Avoid repeated freeze/thaw cycles. Dilute only prior to immediate use.
Storage:	4 °C/-20 °C
Storage Comment:	Store at 2-8 °C for short periods. For longer periods of storage, store at -20 °C.

## Images



### Western Blotting

**Image 1.** LZTFL1 antibody used at 2.5 µg/ml to detect target protein.