

Datasheet for ABIN629868  
**anti-ATIC antibody (Middle Region)**



[Go to Product page](#)

3 Images

## Overview

Quantity:	100 µg
Target:	ATIC
Binding Specificity:	Middle Region
Reactivity:	Human, Mouse, Rat, Dog
Host:	Rabbit
Clonality:	Polyclonal
Conjugate:	This ATIC antibody is un-conjugated
Application:	Western Blotting (WB), Immunohistochemistry (IHC)

## Product Details

Immunogen:	ATIC antibody was raised using the middle region of ATIC corresponding to a region with amino acids RTLFGLHLSQKRNNGVVDKSLFSNVVTKNKDLPESALRDLIVATIAVKYT
Specificity:	ATIC antibody was raised against the middle region of ATIC
Purification:	Purified

## Target Details

Target:	ATIC
Alternative Name:	ATIC ( <a href="#">ATIC Products</a> )
Background:	ATIC is a bifunctional protein requiring dimerization for transformylase activity.
Molecular Weight:	30 kDa (MW of target protein)

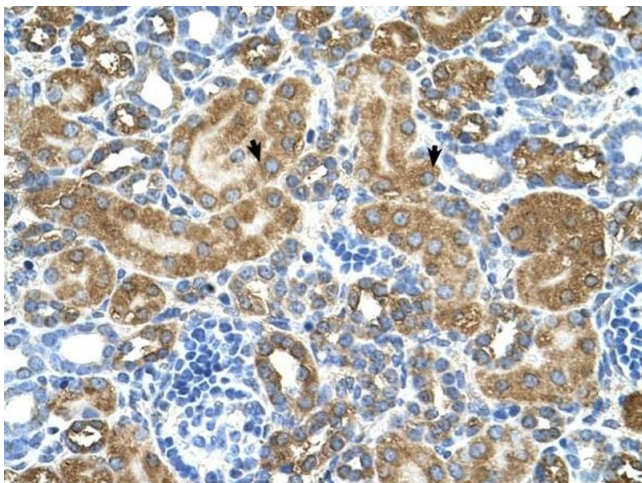
## Application Details

Application Notes:	WB: 5 µg/mL, IHC: 4-8 µg/mL Optimal conditions should be determined by the investigator.
Comment:	ATIC Blocking Peptide, catalog no. 33R-8229, is also available for use as a blocking control in assays to test for specificity of this ATIC antibody
Restrictions:	For Research Use only

## Handling

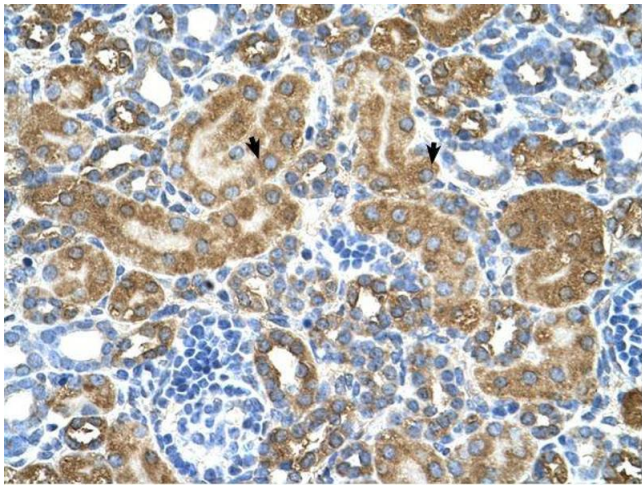
Format:	Lyophilized
Reconstitution:	Lyophilized powder. Add distilled water for a 1 mg/mL concentration of ATIC antibody in PBS
Concentration:	Lot specific
Buffer:	PBS
Handling Advice:	Avoid repeated freeze/thaw cycles. Dilute only prior to immediate use.
Storage:	4 °C/-20 °C
Storage Comment:	Store at 2-8 °C for short periods. For longer periods of storage, store at -20 °C.

## Images



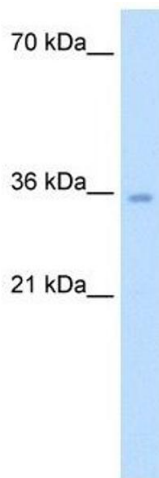
### Immunohistochemistry

**Image 1.** ATIC antibody was used for immunohistochemistry at a concentration of 4-8 µg/ml to stain Epithelial cells of renal tubule (arrows) in Human Kidney. Magnification is at 400X



### Immunohistochemistry

**Image 2.** ATIC antibody was used for immunohistochemistry at a concentration of 4-8 ug/ml. Magnification is at 400X



### Western Blotting

**Image 3.** ATIC antibody used at 5 ug/ml to detect target protein.